



2013

ET FRENCH TOAST
OFFICIAL SCHOOL WEAR

left to right:

A9423	Interlock Knit Polo with Picot Collar (light yellow & gold)	page 7
K9334	Stretch Twill Bootleg Pant	page 25
A9084	Pique Polo with Knit Collar	page 49
K9334	Adjustable Waist Double-Knee Pant	page 25
A9423	Interlock Knit Polo with Picot Collar	page 7
K9405	Stretch Twill Skinny Leg Pant	page 25
A9423	Interlock Knit Polo with Picot Collar (light blue & royal)	page 49
K9444	Stretch Twill Straight Leg Pant	page 26
A9423	Pique Polo with Knit Collar	page 49
K9280	Adjustable Waist & Hem Double-Knee Pant	page 59
A9084	Pique Polo with Knit Collar (kelly & hunter green)	page 49
K9103	Adjustable Waist Pleated Double-Knee Pant	page 59





CONTENTS

Girls

Polos	04
Blouses	12
Sweaters	18
Shorts	22
Pants	14
Jackets	30
Scooters/Skirts	32
Jumpers	40
Dresses	44
Gym	46

Boys

Polos	48
Woven	52
Sweaters	54
Shorts	56
Pants	58
Jackets	62
Gym	64

Toddlers

Girls	66
Girls Gym	72
Boys	74
Boys Gym	78

@class

Girls	80
Boys	82

Ties/Cross Ties	84
------------------------	----

Size Charts	86
--------------------	----

Assortment Packs	87
-------------------------	----

COLOR GUIDES

fashion swatches

solid

A	B	C	D	E	F	G	H	J	K
white	light blue	light yellow	pink	navy	black	khaki	hunter green	grey	burgundy

L	M	N	P	Q	R	S	T	U	V	Y
gold	brown	red	royal	light grey	charcoal	purple	teal	kelly green	orange	hot pink

plaids

B1	G1	F1	G1	B1	J1
burgundy plaid	green plaid	blue/red plaid	blue/gold plaid	brown plaid	navy/red plaid

GIRLS POLOS



A9423 Interlock Knit Polo with Picot Collar
K9334 Stretch Twill Bootleg Pant

page 7
page 26



SHORT SLEEVE STRETCH PIQUE POLO

Our great basic pique polo is updated with a bit of stretch for good fit and up to date styling for today's fashion conscious girl.

Cotton/spandex blend. Imported. Machine wash.

A9403



2T-4T	MA										
4-6X	UA	S	S	●	S	●	S	●	●	●	●
7-14	XA	S	S	●	S	●	S	●	●	●	●
16-20	XD	S	S	●	S	●	S	●	●	●	●
10.5-20.5	XH	●	●	●	●	●	●	●	●	●	●



LONG SLEEVE STRETCH PIQUE POLO

Our great basic pique polo is updated with a bit of stretch for good fit and up to date styling for today's fashion conscious girl.

Cotton/spandex blend. Imported. Machine wash.

A9430



2T-4T	MA								
4-6X	UA	●	●	●	●	●	●	●	●
7-14	XA	●	●	●	●	●	●	●	●
16-20	XD	●	●	●	●	●	●	●	●
10.5-20.5	XH	●	●	●	●	●	●	●	●



SKINNY PLACKET FITTED JERSEY POLO

Girls love the narrow placket, tailored shape, and gathered sleeve of this polo. A "stock-up" item for many parents!

Cotton blend. Imported. Machine wash.

A9304



2T-4T	MA									
4-6X	UA	S	S	S	S	S	●	●	●	●
7-14	XA	S	S	S	S	S	●	●	●	●
16-20	XD	S	S	S	S	S	●	●	●	●
10.5-20.5	XH	●	●	●	●	●	●	●	●	●



INTERLOCK KNIT POLO WITH CONTRASTING PICOT COLLAR

Our smooth knit polo with contrasting navy picot trim always looks fresh and neat. It features a sleek three-button placket, simple lines and ribbed cuffs.

Cotton blend. Imported. Machine wash.

A9425



2T-4T	MA								
4-6X	UA	●	●	●	●	●	●	●	●
7-14	XA	●	●	●	●	●	●	●	●
16-20	XD	●	●	●	●	●	●	●	●
10.5-20.5	XH	●	●	●	●	●	●	●	●

POLOS

- **NARROWER PLACKETS**



- **SHORTER SLEEVES**
- **TAPERED, MORE FEMININE FIT**



INTERLOCK KNIT POLO WITH PICOT COLLAR

Classically styled with a sleek, three-flower button placket, our comfortable polo gets a feminine twist with picot trim at the collar and ribbed cuffs.

Cotton blend. Imported. Machine wash.

A9423

		A	B	C	E	H	N	K	F	J	L	P	S	D
2T-4T	MA	S	S	S	S	●	S	●						●
4-6X	UA	S	S	S	S	S	S	S	●	●	●	●	●	●
7-14	XA	S	S	S	S	S	S	S	●	●	●	●	●	●
16-20	XD	S	S	S	S	S	S	S	●	●	●	●	●	●
10.5-20.5	XH	S	S	S	S	●	●	●	●	●	●	●	●	●



LONG SLEEVE INTERLOCK KNIT POLO WITH PICOT COLLAR

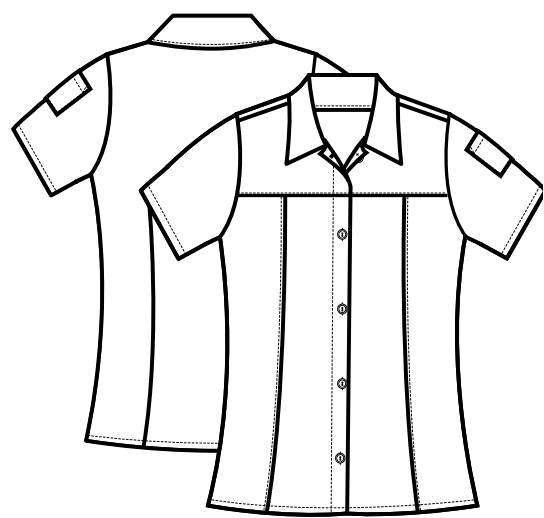
Classically styled with a sleek, three-flower button placket, our comfortable polo gets a feminine twist with picot trim at the collar.

Cotton blend. Imported. Machine wash.

A9424

		A	B	C	E	H	N	K	F	J	L	D
2T-4T	MA	S	●	●	●		●					●
4-6X	UA	S	S	S	S	●	●	S	●	●	●	●
7-14	XA	S	S	S	S	●	●	S	●	●	●	●
16-20	XD	S	S	S	S	●	●	S	●	●	●	●
10.5-20.5	XH	S	●	●	●	●	●	●	●	●	●	●

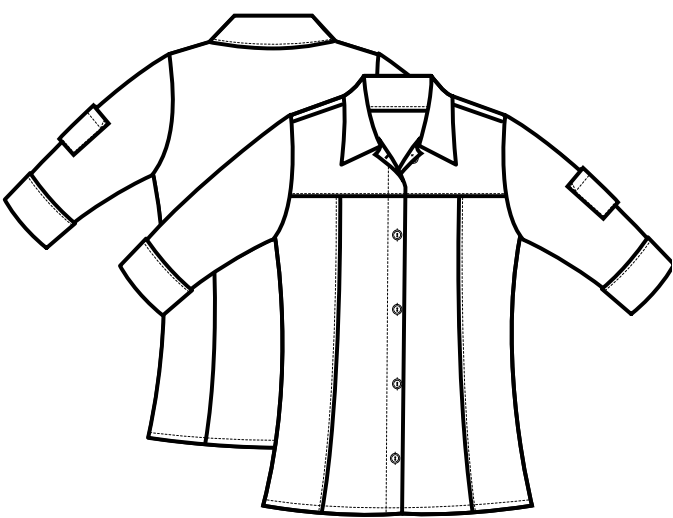
GIRLS POLOS



SHORT SLEEVE POLY KNIT BUTTON DOWN

This poly knit button down with patch pocket on sleeve is a great alternative. The princess seams give a tailored silhouette.

Polyester. Imported. Machine wash.



3/4 SLEEVE POLY KNIT BLOUSE

The latest fashion trend is updated with darts for a fitted silhouette, three-quarter sleeves and turn-back cuffs.

Polyester. Imported. Machine wash.

A9052



2T-4T	MA		
4-6X	UA	●	●
7-14	XA	●	●
16-20	XD	●	●
10.5-20.5	XH	●	

A9037



2T-4T	MA			
4-6X	UA	S	●	●
7-14	XA	S	●	●
16-20	XD	S	●	●
10.5-20.5	XH			



rhinestone button



rhinestone button

POLY KNIT TOP WITH RHINESTONE BUTTONS

At last, a wash and wear polo that everyone will love. This adorable top boasts simple gathers, side slits and rhinestone button closure.

Polyester. Imported. Machine wash.

PUFF SLEEVE – DOUBLE BUTTON POLO

Cute little double-buttoned puffed sleeves dress up our basic girls' polo. Shaped for feminine fit.

Cotton blend. Imported. Machine wash.

A9307



2T-4T	MA		
4-6X	UA	●	●
7-14	XA	●	●
16-20	XD	●	●
10.5-20.5	XH		

A9432



2T-4T	MA	●
4-6X	UA	●
7-14	XA	●
16-20	XD	●
10.5-20.5	XH	●



RHINESTONE COLLAR RUFFLE POLO

Our jaunty polo sports the best of both worlds: classic polo styling... with a surprise of sparkles on the collar, rhinestone buttons and pretty ruffle trimmed placket. Double stitched hem and longer length for great fit.

Cotton blend. Imported. Machine wash.

A9455

A

2T-4T	MA	
4-6X	UA	●
7-14	XA	●
16-20	XD	●
10.5-20.5	XH	



CONTRAST MOCK 2-FER POLO WITH NAVY POLKA DOT NECK BINDING

Our basic polo sports the layered look –mock that is, with a touch of navy blue polka inside the collar. A bit of navy trim sits at the front V-neck and peeps out under the hem. Two looks in one, and one that she'll love! Feminine fit; longer length.

Cotton blend. Imported. Machine wash.

A9456

A

2T-4T	MA	
4-6X	UA	●
7-14	XA	●
16-20	XD	●
10.5-20.5	XH	●



SHORT SLEEVE WAIST TUCK POLO

Cap sleeves, an elongated placket and empire waist tucked details update our basic polo.

Cotton blend. Imported. Machine wash.

A9406

A

2T-4T	MA	
4-6X	UA	●
7-14	XA	●
16-20	XD	●
10.5-20.5	XH	



BUCKLE CUFF POLO

Our basic polo...glammed up with cute little silver buckles on the sleeves cuffs. Front pocket. Feminine fit; longer length.

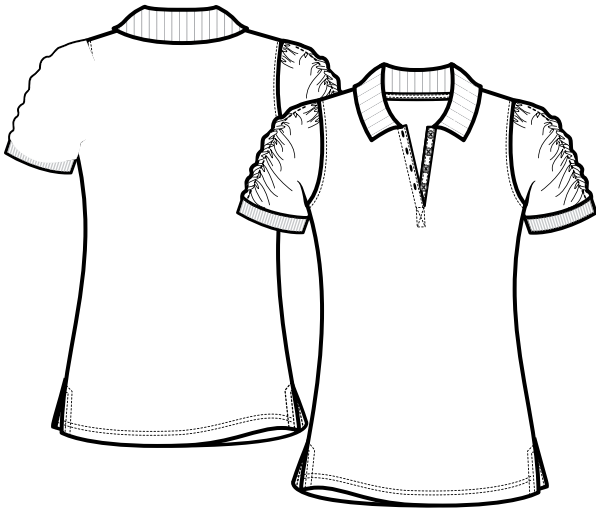
Cotton blend. Imported. Machine wash.

A9461

A

2T-4T	MA	
4-6X	UA	●
7-14	XA	●
16-20	XD	●
10.5-20.5	XH	

GIRLS POLOS



SHORT SLEEVE RUCHED SLEEVE POLO

Classic styling meets fashion chic. Our placket front polo with short ruched sleeve detailing.

Cotton blend. Imported. Machine wash.

A9400

A

2T-4T	MA	
4-6X	UA	●
7-14	XA	●
16-20	XD	●
10.5-20.5	XH	



DOUBLE POCKET POLO

Our trendy polo sports button down flap pockets, a bit of ruching at the sleeves and a longer "U" shaped hem to wear tucked in or out. A great addition to a girl's school wardrobe! Slim fit; longer length.

Cotton blend. Imported. Machine wash.

A9447

A B E N

2T-4T	MA				
4-6X	UA	●	●	●	●
7-14	XA	●	●	●	●
16-20	XD	●	●	●	●
10.5-20.5	XH				



**NEW
ITEM**

STRETCH PIQUE POLO

WITH NAVY POLKA DOT NECK BINDING

It's all in the details! This classic polo boasts a small buttoned pocket and inside-neck polka dot trim. Slim fit; longer length

Cotton, Spandex. Imported. Machine wash.

A9459

A B E N

2T-4T	MA				
4-6X	UA	●	●	●	●
7-14	XA	●	●	●	●
16-20	XD	●	●	●	●
10.5-20.5	XH				



CARDIGAN BLOUSE 2 FOR

What's better than a shirt and a cardigan? A combo that's both! Our short sleeve cardigan boasts mock shirt sleeves and collar.

Cotton blend. Imported. Machine wash.

A9409

E

2T-4T	MA	●
4-6X	UA	●
7-14	XA	●
16-20	XD	●
10.5-20.5	XH	●



SASH WAIST TUNIC POLO

With fashion features borrowed from the runways, our self-tie longer-length blouse will score big on campus this year! Silver button front placket and U-shaped hem.

Cotton blend. Imported. Machine wash.

A9449

A

2T-4T	MA	●
4-6X	UA	●
7-14	XA	●
16-20	XD	●
10.5-20.5	XH	●



A9449 Sash Waist Tunic Polo
K9444 Stretch Twill Bootleg Pant

page 11
page 26

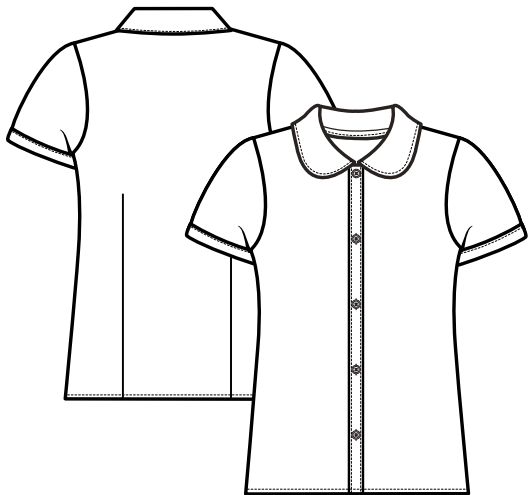
GIRLS BLOUSES



left to right:

E9287 Long Sleeve Button Down Oxford with Darts
F9002 Adjustable Cross Tie (burgundy)
K9444 Stretch Twill Straight Leg Pant
E9287 Long Sleeve Button Down Oxford with Darts
F9002 Adjustable Cross Tie (navy)
K9334 Stretch Twill Bootleg Pant
E9287 Long Sleeve Button Down Oxford with Darts
F9003 Adjustable Plaid Cross Tie (blue/gold)
K9405 Stretch Twill Skinny Leg Pant

page 14
page 85
page 26
page 14
page 85
page 26
page 14
page 85
page 25

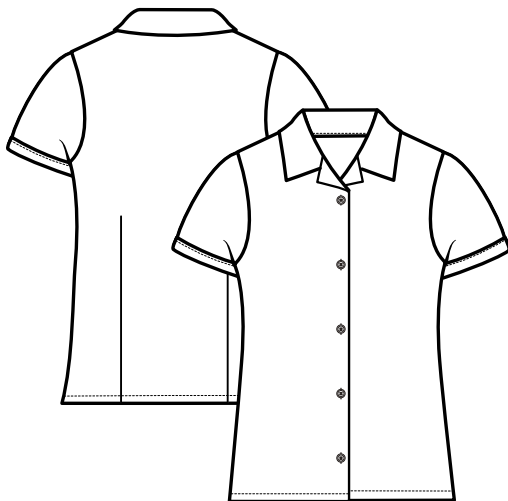


SHORT SLEEVE PETER PAN BLOUSE

A true classic, our easy-care™ blouse is topped by a rounded Peter Pan collar.
Cotton blend with Wrinkle No More™ fabric. Imported. Machine wash.

E9320

		A	B	C	D
2T-4T	MA	S	S	S	●
4-6X	UA	S	S	S	S
7-14	XA	S	S	S	S
16-20	XD	S	S	S	S
10.5-20.5	XH	S	S	●	●
42-46	XJ	S	●	●	●

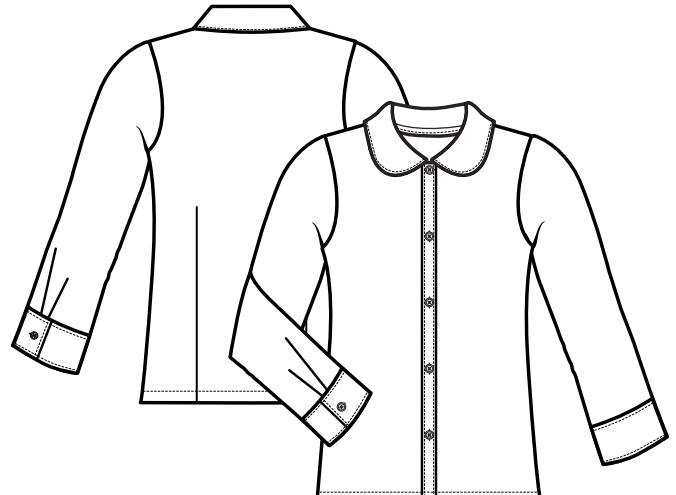


SHORT SLEEVE POINTY COLLAR BLOUSE

Our versatile blouse has a pointy collar and a fashionable mock cuff sleeve.
Cotton blend with Wrinkle No More™ fabric. Imported. Machine wash.

E9324

		A	B	C
2T-4T	MA			
4-6X	UA	S		
7-14	XA	S	S	●
16-20	XD	S	S	●
10.5-20.5	XH	S	●	●
42-46	XJ	●	●	●

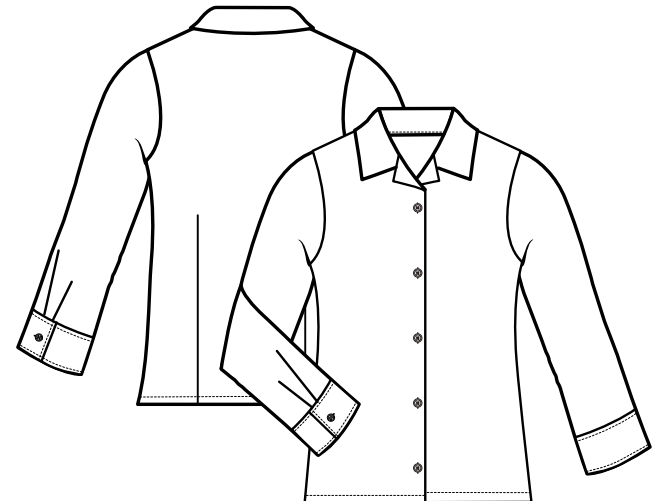


LONG SLEEVE PETER PAN BLOUSE

A true classic, our easy-care™ blouse is topped by a rounded Peter Pan collar.
Cotton blend with Wrinkle No More™ fabric. Imported. Machine wash.

E9321

		A	B	C	D
2T-4T	MA	S	S	S	●
4-6X	UA	S	S	S	S
7-14	XA	S	S	S	S
16-20	XD	S	S	S	S
10.5-20.5	XH	S	●	●	●
42-46	XJ	S	●	●	●



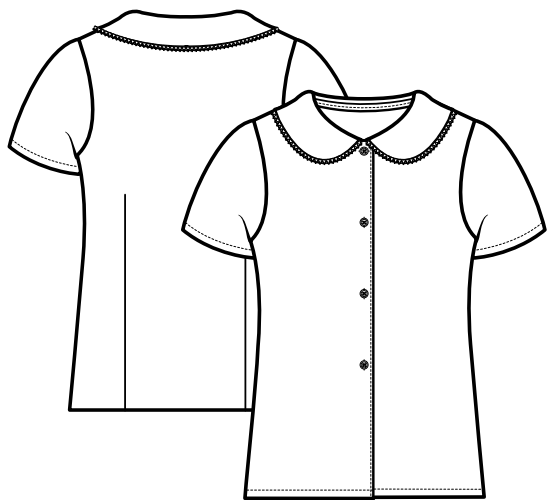
LONG SLEEVE POINTY COLLAR BLOUSE

Our versatile blouse has a pointy collar and a fashionable mock cuff sleeve.
Cotton blend with Wrinkle No More™ fabric. Imported. Machine wash.

E9325

		A	B	C
2T-4T	MA			
4-6X	UA	S		
7-14	XA	S	S	●
16-20	XD	S	S	●
10.5-20.5	XH	S	●	●
42-46	XJ	●	●	●

GIRLS BLOUSES



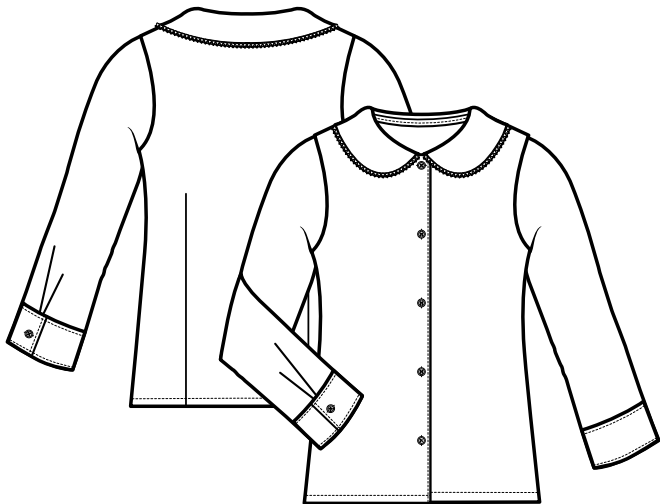
SHORT SLEEVE PETER PAN BLOUSE WITH LACE TRIM COLLAR

Lace-edge detailing around the collar gives extra flair to our original classic.
Cotton blend with Wrinkle No More™ fabric. Imported. Machine wash.

E9322



2T-4T	MA			
4-6X	UA	S	●	●
7-14	XA	S	●	●
16-20	XD	S	●	●
10.5-20.5	XH			
42-46	XJ			



LONG SLEEVE PETER PAN BLOUSE WITH LACE TRIM COLLAR

Lace-edge detailing around the collar gives extra flair to our original long sleeved version.
Cotton blend with Wrinkle No More™ fabric. Imported. Machine wash.

E9323



2T-4T	MA			
4-6X	UA	S	●	●
7-14	XA	S	●	●
16-20	XD	S	●	●
10.5-20.5	XH			
42-46	XJ			



SHORT SLEEVE BUTTON DOWN OXFORD WITH DARTS

Totally classic and totally cute, our girls short sleeve oxford sports a mock cuffs and a front pocket.
Cotton blend with Wrinkle No More™ fabric. Imported. Machine wash.

E9284



2T-4T	MA			
4-6X	UA	S	●	
7-14	XA	S	●	
16-20	XD	S	●	
10.5-20.5	XH	●	●	
42-46	XJ	●		



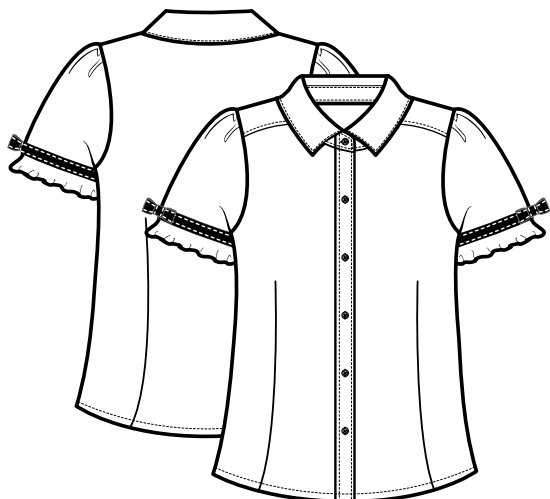
LONG SLEEVE BUTTON DOWN OXFORD WITH DARTS

The oxford for every girl, this perfect long sleeve classic top has a single breast pocket, button down collar, and flattering fit,
Cotton blend with Wrinkle No More™ fabric. Imported. Machine wash.

E9287



2T-4T	MA			
4-6X	UA	S	●	
7-14	XA	S	●	
16-20	XD	S	●	
10.5-20.5	XH	●		
42-46	XJ	●		



SHORT SLEEVE RIBBON BOW BLOUSE

Sweet little ribbons trim and accentuate the ruffled edges of our short sleeve classic. Perfectly simple...simply perfect.

Cotton blend with Wrinkle No More™ fabric. Imported. Machine wash.

E9279



2T-4T	MA	●	●	●
4-6X	UA	●	●	●
7-14	XA	●	●	●
16-20	XD	●	●	●
10.5-20.5	XH			
42-46	XJ			



FRENCH CUFF BLOUSE

Our pretty blouse is retro inspired with angled French cuff sleeves, ruched V-neck and pointy collar. Totally school approved, it will add panache to all of her outfits.

Cotton blend with Wrinkle No More™ fabric. Imported. Machine wash.

E9343



2T-4T	MA	
4-6X	UA	●
7-14	XA	●
16-20	XD	●
10.5-20.5	XH	
42-46	XJ	



RUFFLE SLEEVE DOUBLE POCKET BLOUSE

Aviator meets fashion diva – with trendy on line pockets, shoulder and dart detailing, and the added touch of flounced ruffles at the sleeve.

Cotton blend with Wrinkle No More™ fabric. Machine wash.

E9334



2T-4T	MA	
4-6X	UA	●
7-14	XA	●
16-20	XD	●
10.5-20.5	XH	
42-46	XJ	



E9353 Button Back Tuxedo Blouse

GIRLS BLOUSES



RHINESTONE POCKET BLOUSE

Our newest blouse is dazzling with “diamonds” across the front pocket. Cute puffed sleeves and slim dart detailing make it an all around winner. Slim fit; longer length.

Cotton blend with Wrinkle No More™ fabric. Machine wash.

E9350		A
2T-4T	MA	
4-6X	UA	●
7-14	XA	●
16-20	XD	●
10.5-20.5	XH	
42-46	XJ	



RHINESTONE CUFF BLOUSE

For the fashion forward girl, our puffed sleeved gather blouse is just right. Empire waisted to flatter any shape, it is a star in the classroom.

Cotton blend with Wrinkle No More™ fabric. Machine wash.

E9330		A	B
2T-4T	MA		
4-6X	UA	●	●
7-14	XA	●	●
16-20	XD	●	●
10.5-20.5	XH		
42-46	XJ		



PINTUCK POPLIN BLOUSE

For the more sophisticated student, this short sleeve blouse has unique pintuck and picot details in front and satin bows at the sleeves.

Cotton blend with Wrinkle No More™ fabric. Imported. Machine wash.

E9247		A
2T-4T	MA	
4-6X	UA	●
7-14	XA	●
16-20	XD	●
10.5-20.5	XH	
42-46	XJ	



RUFFLE YOKE BLOUSE

Definitely one of the prettiest blouses in our collection; it's full of great details: ruffle trimmed yoke, soft tucks at the sleeves, and smartly seamed for a most flattering fit.

Cotton blend with Wrinkle No More™ fabric. Machine wash.

E9352		A
2T-4T	MA	
4-6X	UA	●
7-14	XA	●
16-20	XD	●
10.5-20.5	XH	
42-46	XJ	



rhinestone button

NEW
ITEM

PEPLUM BLOUSE

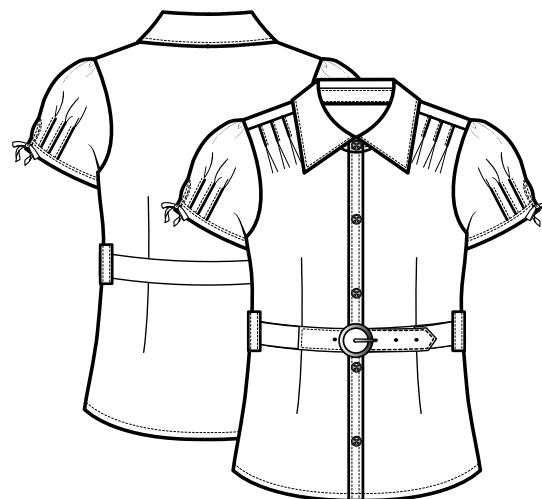
Fashion right and totally on trend – our new peplum blouse is one of the prettiest we've seen. Delicate buttons rhinestone down the front with a simple flounce of flattering peplum just below the waist. She will absolutely love to add it to her school wardrobe!

Cotton blend with Wrinkle No More™ fabric. Imported. Machine wash.

E9351

A

2T-4T	MA
4-6X	UA
7-14	XA
16-20	XD
10.5-20.5	XH
42-46	XJ



SHORT SELF BELTED BLOUSE

Our short sleeve basic is now a fashion statement with self belt, pintuck detailing at the shoulders and on the sleeves. Darted for feminine fit.

Cotton blend with Wrinkle No More™ fabric. Imported. Machine wash.

E9303

A

2T-4T	MA
4-6X	UA
7-14	XA
16-20	XD
10.5-20.5	XH
42-46	XJ



NEW
ITEM

BUTTON BACK TUXEDO BLOUSE

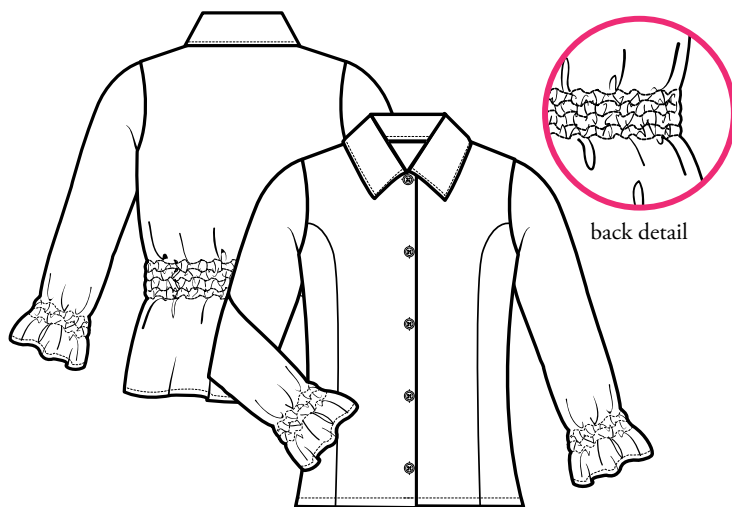
Introducing the longer length tunic top – Softly gathered pin tucking down the front and four small buttons at the back to cinch in the waist, make it one she will reach for time and again.

Cotton blend with Wrinkle No More™ fabric. Imported. Machine wash.

E9353

A

2T-4T	MA
4-6X	UA
7-14	XA
16-20	XD
10.5-20.5	XH
42-46	XJ



back detail

LONG SLEEVE GATHERED ELASTIC BACK SHIRT

Gathered bell sleeves and stylish elastic smocking detail across the back brings this basic top up-to-date in a fashionable way.

Cotton blend with Wrinkle No More™ fabric. Imported. Machine wash.

E9070

A

2T-4T	MA
4-6X	UA
7-14	XA
16-20	XD
10.5-20.5	XH
42-46	XJ

GIRLS SWEATERS



left to right:

A9409 Cardigan Blouse 2 For
V9000 Pleated Skirt (khaki)
C9000 V Neck Anti-Pill Cardigan
E9284 Short Sleeve Button Down Shirt with Darts
F9003 Adjustable Plaid Cross Tie
X9103 Two Tab Scooter
C9201 Boyfriend Duster
E9320 Short Sleeve Peter Pan Blouse
V9000 Pleated Skirt (navy)

page 10
page 38
page 54
page 14
page 85
page 33
page 21
page 13
page 38



KNIT CARDIGAN SWEATER

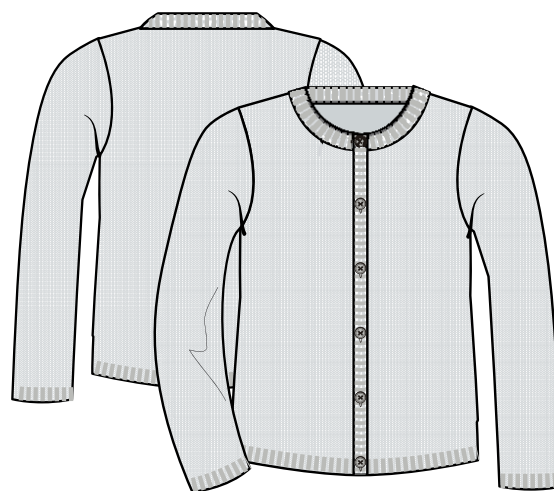
A true traditional crew neck cardigan with dyed-to-match button closure and front pockets. Special anti-pilling qualities keep it looking great throughout the entire school year.

Acrylic. Imported. Machine wash.

C9004

E F H K M N J

2T-4T	MA	●						
4-6X	UA	S	●	●	S	●	●	●
7-14	XA	S	●	●	S	●	●	●
16-20	XD	S	●	●	S	●	●	●
10.5-20.5	XH	●						



FINE GAUGE KNIT CARDIGAN SWEATER

Our classic cardigan has a soft cashmere-like feel that girls just love. Great for all seasons with dyed-to-match button closure.

Acrylic. Imported. Machine wash.

C9008

E A K

2T-4T	MA				
4-6X	UA	S	●	●	
7-14	XA	S	●	●	
16-20	XD	S	●		
10.5-20.5	XH				



CREW NECK CARDIGAN WITH POCKETS

The newest addition to our sweater collection- has all classic details including ribbed cuffs and hem, full button front and pocket trim. Heavier weight non-pill knit.

Acrylic. Imported. Machine wash.

C9218

E K

2T-4T	MA		
4-6X	UA	●	●
7-14	XA	●	●
16-20	XD	●	●
10.5-20.5	XH		



POM-POM ZIP UP SWEATER

This chunky knit sweater will be a favorite for all girls. It features a shawl collar and fun pom-poms attached to the zipper pull.

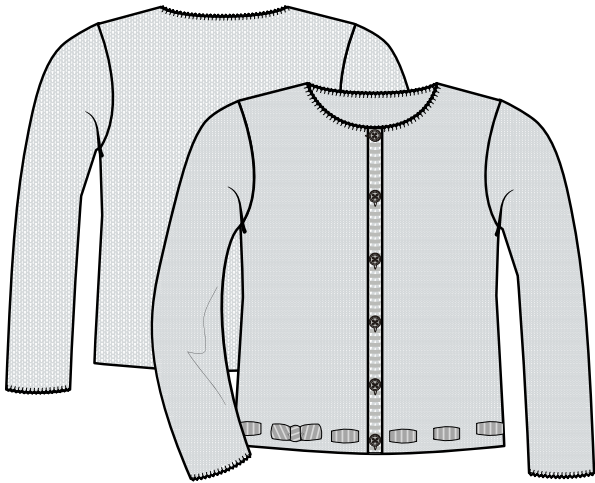
Acrylic. Imported. Machine wash.

C9087

E

2T-4T	MA	
4-6X	UA	S
7-14	XA	S
16-20	XD	S
10.5-20.5	XH	

GIRLS SWEATERS



SWEATER WITH RIBBON TRIM

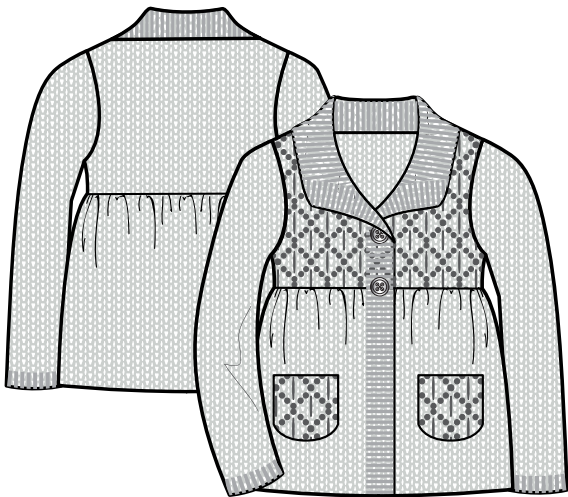
This darling little cardigan has an ultra-cute grosgrain ribbon weave detail that will make any little girl feel they’ve earned an “A” in style!

Acrylic. Imported. Machine wash.

C9108

E

2T-4T	MA	●
4-6X	UA	●
7-14	XA	●
16-20	XD	●
10.5-20.5	XH	●



POINTELLE KNIT CARDIGAN

Too cute! Our empire waisted knit baby doll sweater is on the cutting edge of fashion but totally school worthy! Pointelle detailing and matching pockets highlight this trend setter.

Acrylic. Imported. Machine wash.

C9207

E

2T-4T	MA	●
4-6X	UA	●
7-14	XA	●
16-20	XD	●
10.5-20.5	XH	●



CABLE FRONT CARDIGAN

It’s sweet; it’s simple and great with all of her school uniform outfits. Our cable sweater sports a jaunty hood and full zipper for easy on/off.

Acrylic. Imported. Machine wash.

C9208

E

2T-4T	MA	●
4-6X	UA	●
7-14	XA	●
16-20	XD	●
10.5-20.5	XH	●



SHORT SLEEVE DUSTER CARDIGAN

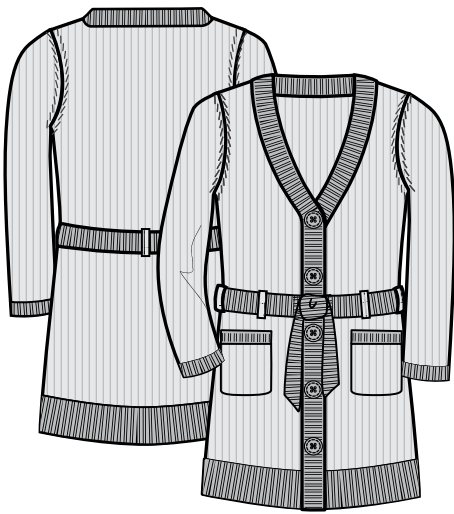
With its longer length and self-sash , our short sleeve duster has all the fashion details she wants in a mid-weight sweater. Cute mini cables with ruching on the front pockets.

Acrylic. Imported. Machine wash.

C9212

E

2T-4T	MA	●
4-6X	UA	●
7-14	XA	●
16-20	XD	●
10.5-20.5	XH	●



BOYFRIEND DUSTER

This look may be borrowed from the boys, but it's definitely all girl with self tie belt, and hand knit-look sweater edging all around.

Acrylic. Imported. Machine wash.

C9201

E

2T-4T	MA	
4-6X	UA	●
7-14	XA	●
16-20	XD	●
10.5-20.5	XH	



C9004 Knit Cardigan Sweater
E9324 Short Sleeve Pointy Collar Blouse
F9003 Adjustable Cross Tie
X9103 Two Tab Scooter

page 19
 page 13
 page 85
 page 54

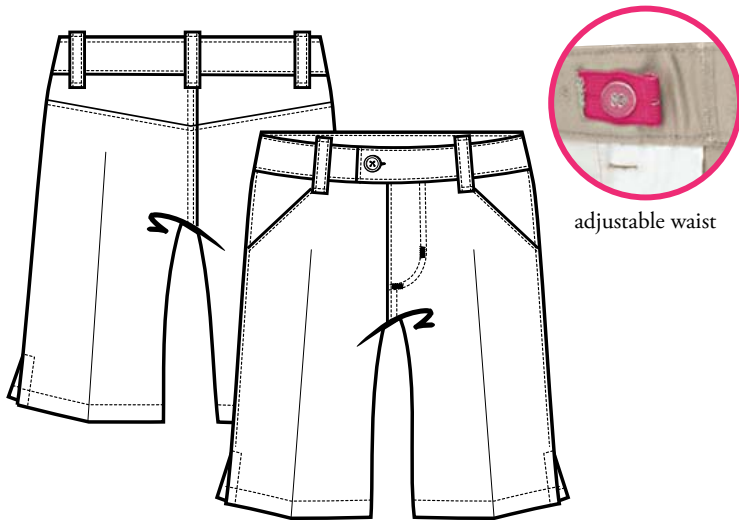
GIRLS SHORTS



left to right:

P9105 Girls Core Fleece Hoodie
A9423 Interlock Knit Polo with Picot Collar (red)
H9061 Twill Bermuda Short
A9423 Interlock Knit Polo with Picot Collar (white)
H9061 Pull-On Girl Short
A9423 Interlock Knit Polo with Picot Collar (navy)
H9061 Below the Knee Stretch Twill Walking Short

page 47
page 7
page 23
page 7
page 69
page 7
page 23



TWILL BERMUDA SHORT

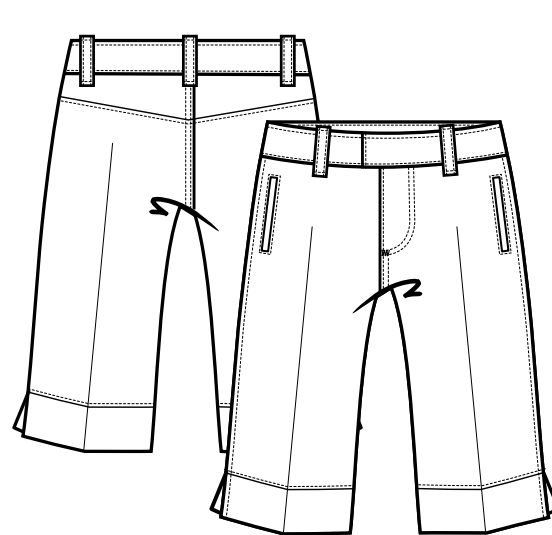
This stretch twill Bermuda short gives girls another option with its knee length style. This flattering cut will make the hot back-to-school days cool.

Cotton/spandex blend. Imported. Machine wash.

H9061

E G F J

2T-4T	MA				
4-6X	UA	S	S	●	●
7-14	XA	S	S	●	●
16-20	XD	S	S	●	●
10.5-20.5	XH	S	S	●	
4S-6XS	UV				
7S-14S	GA				



BELOW THE KNEE STRETCH TWILL WALKING SHORT

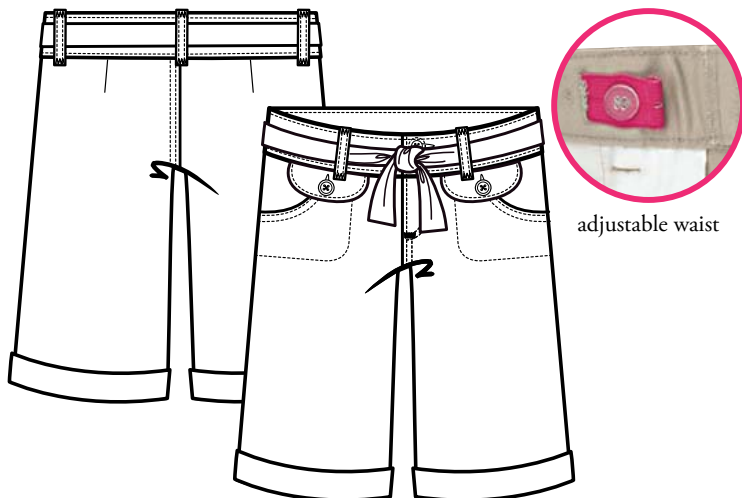
This Bermuda short hits just below the knee. Side welt pockets and side vents add just enough detail to this basic short.

Cotton/spandex blend. Imported. Machine wash.

H9119

E G F

2T-4T	MA			
4-6X	UA	S	S	S
7-14	XA	S	S	S
16-20	XD	S	S	S
10.5-20.5	XH	●	●	●
4S-6XS	UV			
7S-14S	GA			



FLAP POCKET TWILL BERMUDA

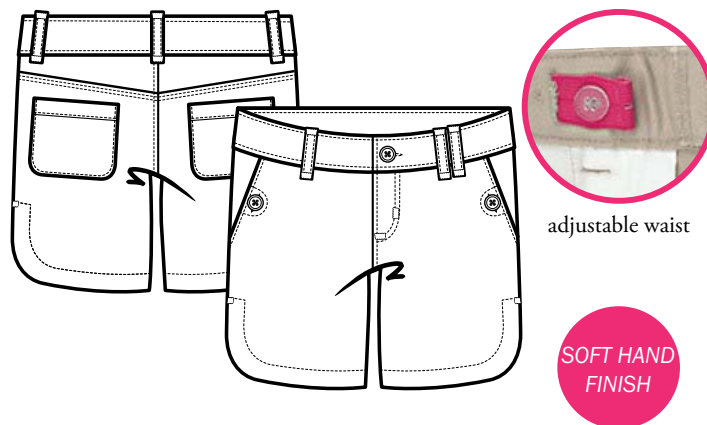
Another newbie to the school scene is our flap pocket bermuda, with self tie sash.

Cotton blend with Wrinkle No More™ fabric. Imported. Machine wash.

H9210

E G

2T-4T	MA		
4-6X	UA	●	●
7-14	XA	●	●
16-20	XD	●	●
10.5-20.5	XH		
4S-6XS	UV		
7S-14S	GA		



BUTTON POCKET MID THIGH SHORT

Our newest short is a great addition to the school uniform roster! Cool and comfortable in a soft brushed finish, for the day's activities with buttoned slant pockets and rounded hem detailing. Adjustable waist for great fit.

Cotton blend with Wrinkle No More™ fabric. Imported. Machine wash.

H9224

E G

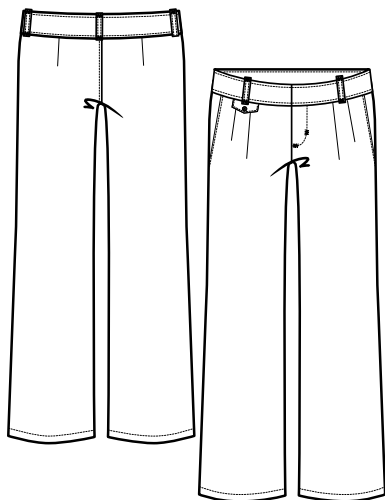
2T-4T	MA		
4-6X	UA	●	●
7-14	XA	●	●
16-20	XD	●	●
10.5-20.5	XH		
4S-6XS	UV		
7S-14S	GA		

GIRLS PANTS

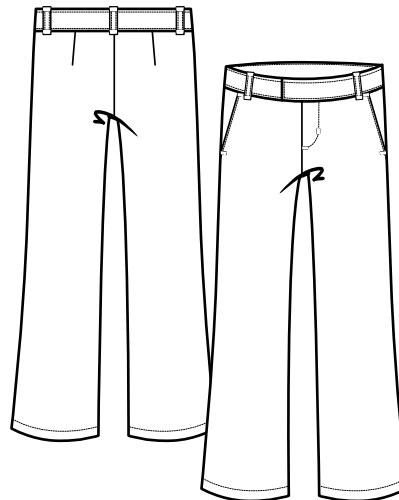


E9353 Button Back Tuxedo Blouse
K9465 Straight Leg Pant with Coin Pocket

page 17
page 25



adjustable waist



adjustable waist

ADJUSTABLE WAIST PLEATED PANT

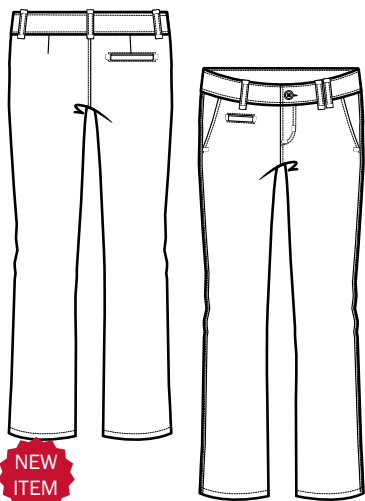
A home run in school uniforms, this basic pleated pant is now updated with a new fit. More flattering and modern, the pant still boasts its classic coin pocket, side pockets, and an adjustable waist.

Cotton blend with Wrinkle No More™ fabric. Imported. Machine wash.

K9404

E G F J

2T-4T	MA				
4-6X	UA	S	S	●	●
7-14	XA	S	S	●	●
16-20	XD	S	S	●	●
10.5-20.5	XH	S	S	●	●
4S-6XS	UV				
7S-14S	GA				



adjustable waist

SOFT HAND
FINISH

STRAIGHT LEG PANT WITH COIN POCKET

It gets 5 stars for quality, 5 stars for style! Our classic straight leg pant, now with coin pocket detailing is the new must have this year. Soft hand finish cotton blend fabric.

Cotton blend with Wrinkle No More™ fabric. Imported. Machine wash.

K9465

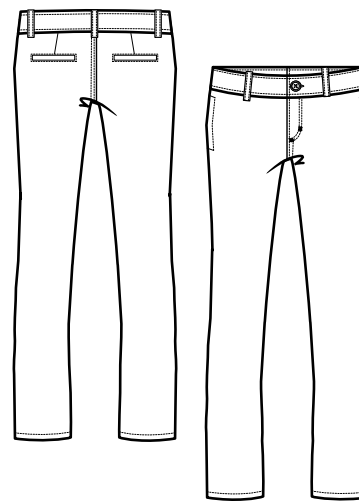
E G

2T-4T	MA		
4-6X	UA	●	●
7-14	XA	●	●
16-20	XD	●	●
10.5-20.5	XH	●	●
4S-6XS	UV		
7S-14S	GA		

K9295

E G F J K H

2T-4T	MA						
4-6X	UA	S	S	S	S	●	●
7-14	XA	S	S	S	S	●	●
16-20	XD	S	S	S	S	●	●
10.5-20.5	XH	S	S	S	S	●	●
4S-6XS	UV	S	S	●			
7S-14S	GA	S	S	●			



STRETCH TWILL SKINNY LEG PANT

Here's the skinny...It's back and better than ever in a comfortable mix blend of cotton and spandex. Modified skinny leg- not too tight but fashion right for today's girl on the go.

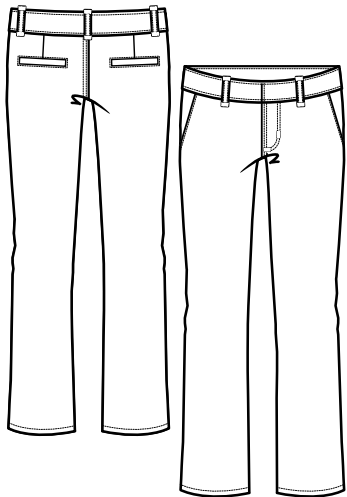
Cotton/spandex blend. Imported. Machine wash.

K9405

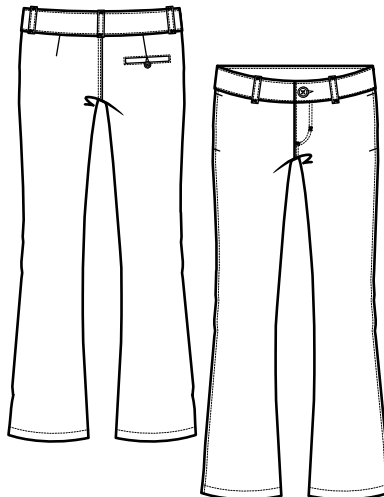
E G F

2T-4T	MA			
4-6X	UA	S	S	S
7-14	XA	S	S	S
16-20	XD	S	S	S
10.5-20.5	XH	●	●	●
4S-6XS	UV			
7S-14S	GA			

GIRLS PANTS



adjustable waist



STRETCH TWILL STRAIGHT LEG PANT

Sleek and straight and perfectly proportioned for a young girl, our straight leg twill will become the basis of her school wardrobe. With functional slanted side pockets and two back pockets.

Cotton/spandex blend. Imported. Machine wash.

STRETCH TWILL BOOTLEG PANT

Timeless and classy, this updated basic pant is a necessity. Made with stretch twill, this pant features a single welt back pocket with a simple button closure and two useful side seam pockets in front.

Cotton/spandex blend. Imported. Machine wash.

K9444

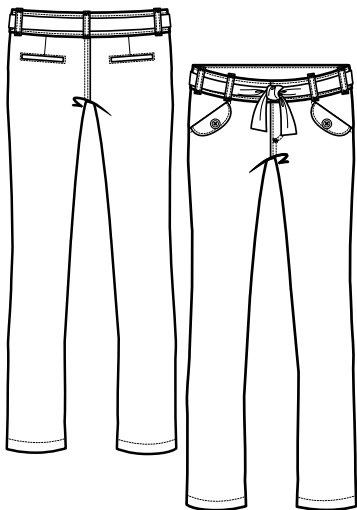


2T-4T	MA			
4-6X	UA	●	●	●
7-14	XA	●	●	●
16-20	XD	●	●	●
10.5-20.5	XH	●	●	●
4S-6XS	UV			
7S-14S	GA			

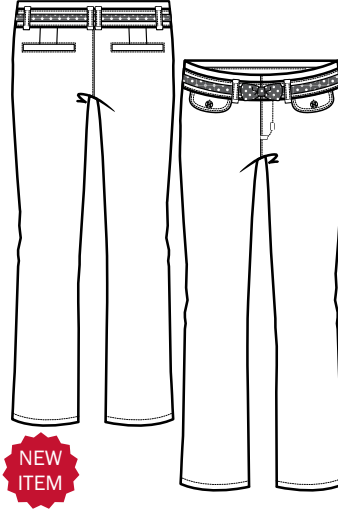
K9334



2T-4T	MA			
4-6X	UA	S	S	●
7-14	XA	S	S	●
16-20	XD	S	S	●
10.5-20.5	XH	●	●	●
4S-6XS	UV			
7S-14S	GA			



adjustable waist



adjustable waist



rhinestone button

NEW ITEM

ADJUSTABLE WAIST SKINNY PANT WITH CUT SASH BELT

The skinny pant that has taken the fashion world by storm...has even more upscale detailing in front flap pockets and little sash belt.

Cotton/spandex blend. Imported. Machine wash.

POLKA DOT BELTED STRAIGHT LEG PANT

Everyday polish whether at school or not...our polka dot belted pant is streamlined and slim, with a splash of dots. Faux pockets in front, pocket detailing in the back.

Cotton blend with Wrinkle No More™ fabric. Imported. Machine wash.

K9421

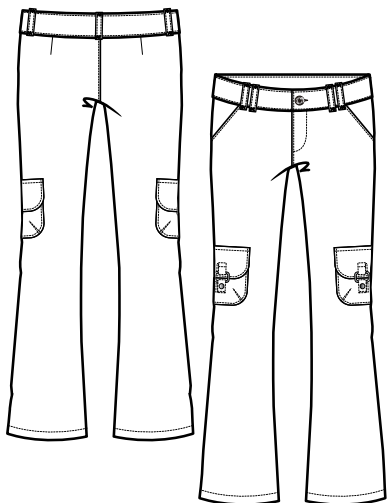


2T-4T	MA		
4-6X	UA	●	●
7-14	XA	●	●
16-20	XD	●	●
10.5-20.5	XH	●	●
4S-6XS	UV		
7S-14S	GA		

K9460



2T-4T	MA		
4-6X	UA	●	●
7-14	XA	●	●
16-20	XD	●	●
10.5-20.5	XH		
4S-6XS	UV		
7S-14S	GA		



BUCKLE CARGO POCKET PANT

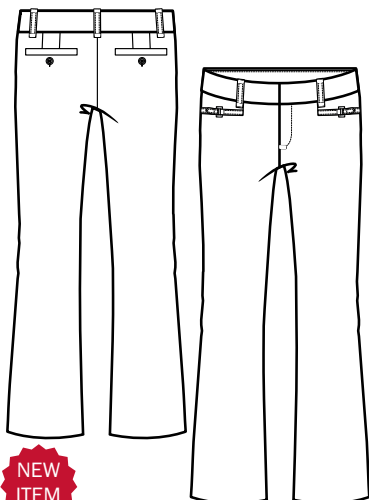
Twill bootcut pant with stylish double belt loops and cargo pockets featuring up-to-the-minute silver buckles.

Cotton blend with Wrinkle No More® fabric. Imported. Machine wash.

K9202

E **G**

2T-4T	MA		
4-6X	UA	●	●
7-14	XA	●	●
16-20	XD	●	
10.5-20.5	XH		
4S-6XS	UV		
7S-14S	GA		



**NEW
ITEM**



adjustable waist

BUCKLE POCKET NARROW BOOTLEG PANT

Uniforms are looking good these days especially with our new narrow bootleg pant. Designed in crisp stretch gabardine – it is the perfect base for our great selection of blouses and knit tops. Smart little metal buckles adorn each pocket.

Rayon, nylon, spandex. Imported. Machine wash.

K9457

E **G** **F**

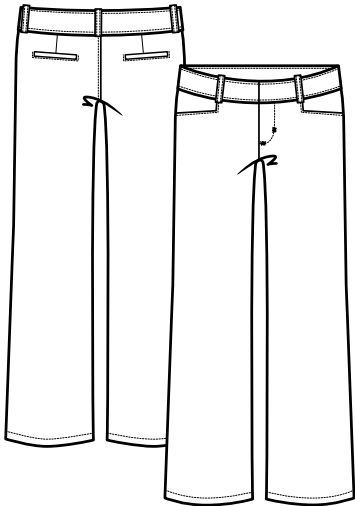
2T-4T	MA			
4-6X	UA	●	●	●
7-14	XA	●	●	●
16-20	XD	●	●	●
10.5-20.5	XH			
4S-6XS	UV			
7S-14S	GA			



E9351 Peplum Blouse
K9405 Straight Twill Skinny Leg Pant

page 17
page 25

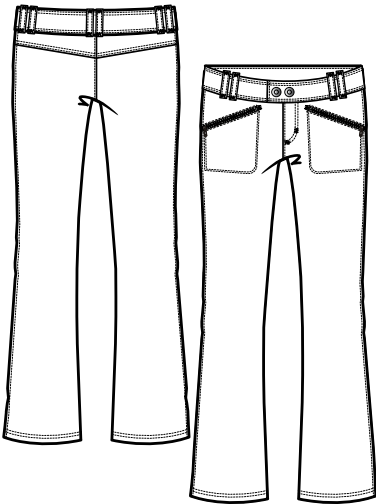
GIRLS PANTS



FLAT FRONT ALL SEASON PANT

The pant girls have been waiting for – comfortable and flattering. Made of a soft poly–rayon blend, these pants are sure to win every season. *Polyester/rayon blend. Imported. Machine wash.*

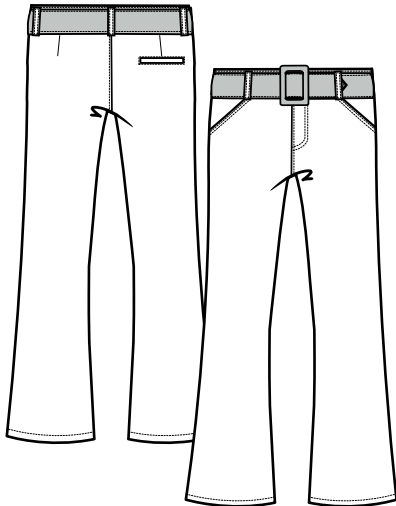
K9105		E	G	F	R
2T-4T	MA				
4-6X	UA	●	●	●	●
7-14	XA	●	●	●	●
16-20	XD	●	●	●	●
10.5-20.5	XH	●	●	●	●
4S-6XS	UV				
7S-14S	GA				



ZIPPER POCKET PANT

Every girl is cool for school in these extra comfortable bootcut pants with two zipper front pockets and silver shank buttons for closure. *Polyester. Imported. Machine wash.*

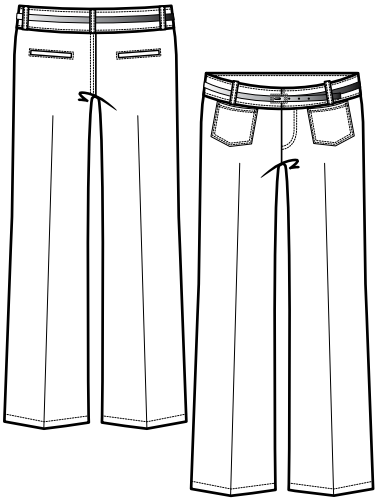
K9168		E	G
4-6X	UA	●	●
7-14	XA	●	●
16-20	XD	●	●
10.5-20.5	XH		
4S-6XS	UV		
7S-14S	GA		



POLY PANT WITH PATENT LEATHER BELT

Our new uniform basic goes glam with the addition of a patent belt. Modified boot cut and slash pockets will look good on any girl. *Polyester. Imported. Machine wash.*

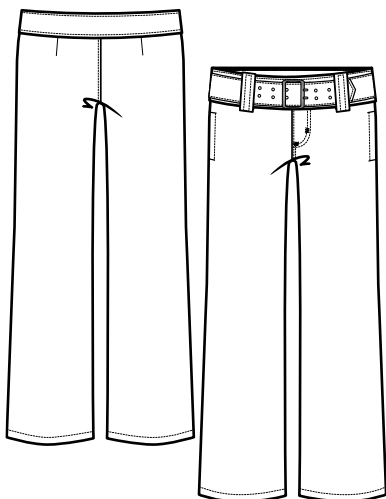
K9418		E	G
2T-4T	MA		
4-6X	UA	●	●
7-14	XA	●	●
16-20	XD	●	●
10.5-20.5	XH	●	●
4S-6XS	UV		
7S-14S	GA		



RHINESTONE SKINNY BELT PANT

This trouser has permanent seams, two cute patch pockets on the front and welt back pockets. It comes with its own skinny belt with rhinestone embellished buckle. *Polyester. Imported. Machine wash.*

K9274		E	G	F
2T-4T	MA			
4-6X	UA	●	●	●
7-14	XA	●	●	●
16-20	XD	●	●	●
10.5-20.5	XH			
4S-6XS	UV			
7S-14S	GA			



BUCKLE PANT

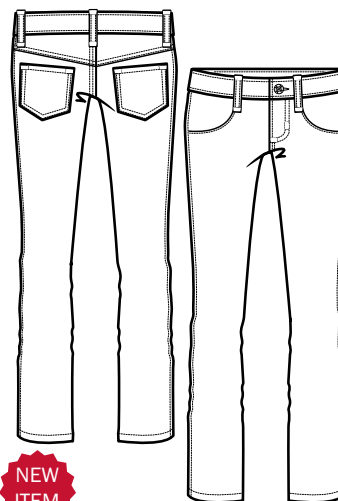
These bootleg pants are perfect for the trendy girl. The pant is accented with a grommeted self fabric belt, an antiqued silver buckle, and two front side seam pockets.

Polyester. Imported. Machine wash.

K9139



2T-4T	MA		
4-6X	UA	●	●
7-14	XA	●	●
16-20	XD	●	●
10.5-20.5	XH		
4S-6XS	UV		
7S-14S	GA		



NEW
ITEM

RHINESTONE BUTTON JEGGING

Simply one of the best ideas to bring to school uniforms. The great fitting 5-pocket jegging...is now in soft, comfortable french terry! It will become her new go-to pant.

Cotton blend. Imported. Machine wash.



adjustable waist

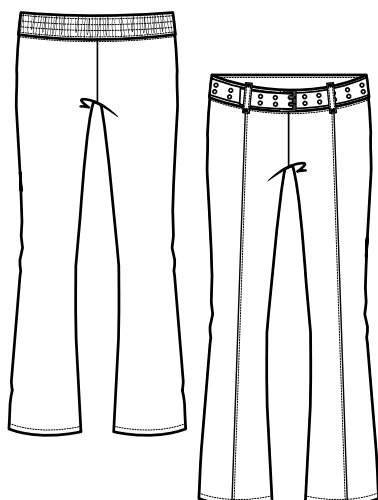


rhinestone
button

K9466



2T-4T	MA		
4-6X	UA	●	●
7-14	XA	●	●
16-20	XD	●	●
10.5-20.5	XH		
4S-6XS	UV		
7S-14S	GA		



PULL-ON SELF BELT KNIT PANT

This fitted pant blends the best of pull-on comfort with the an eye-catching stylish mock belt. Bootleg cut, drop waist, and pintucked front adds extra fashion.

Polyester/spandex blend. Imported. Machine wash.

K9109



2T-4T	MA		
4-6X	UA	S	●
7-14	XA	S	●
16-20	XD	S	●
10.5-20.5	XH	●	●
4S-6XS	UV		
7S-14S	GA		



A9461 Buckle Cuff Polo
K9457 Buckle Pocket Narrow Bootleg Pant

page 9
page 85

GIRLS JACKETS



P9113 Rhinestone Button Blazer

A9456 Contrast Mock 2-Fer Polo with Navy Polka Dot Neck Binding

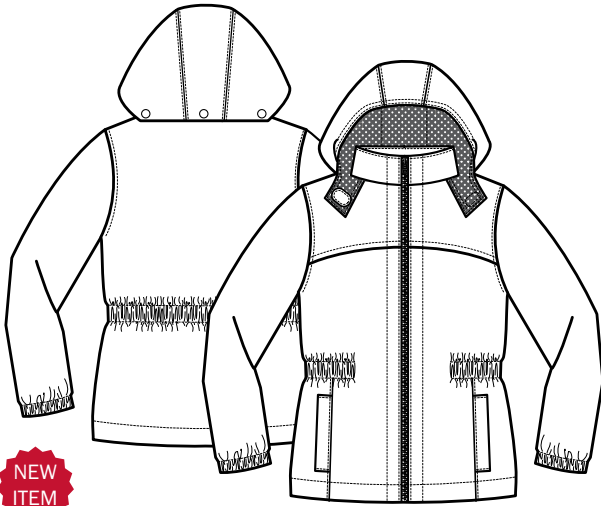
K9466 Rhinestone Button Jegging

page 31

page 9

page 29

GIRLS JACKETS



PONGEE JACKET WITH POLKA DOT LINING AND DETACHABLE HOOD

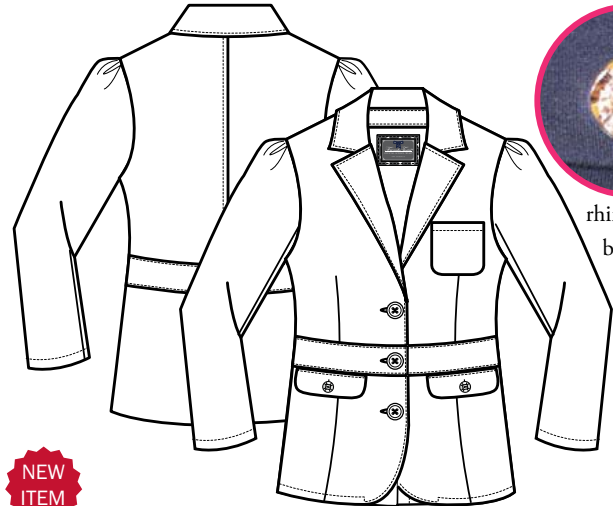
We've designed the classic lightweight nylon jacket with elastic cuffs and waist for good fit, full zipper and detachable hood. And added a cute navy and white polka dot lining as our signature look. Sweet!

Polyester. Imported. Machine wash.

P9114

E

2T-4T	MA	
4-6X	UA	●
7-14	XA	●
16-20	XD	●
10.5-20.5	XH	



rhinestone
button

RHINESTONE BUTTON BLAZER

Our pocket detailed blazer is perfect for assemblies and days when the school calls for a bit more "formality". Especially since it's made of wonderfully soft and comfortable french terry. Detailed with sewn-in self belt, classic pockets and sparkly rhinestone buttons...for that added touch of glam.

Cotton Blend. Imported. Machine wash.

P9113

E

2T-4T	MA	
4-6X	UA	●
7-14	XA	●
16-20	XD	●
10.5-20.5	XH	



SOFT HAND
FINISH

PLEATED BLAZER

As versatile as it gets, our classically detailed blazer is the newest layering piece in school uniforms. With a soft hand finish for comfortable and smart good looks, it's a wear-anywhere basic that will definitely become part of her go to wardrobe.

Cotton blend with Wrinkle No More® fabric. Imported. Machine wash.

P9112

E

2T-4T	MA	
4-6X	UA	●
7-14	XA	●
16-20	XD	●
10.5-20.5	XH	



button
detail

DRESS BLAZER

Our little hopsack blazer is sleek and streamlined for fashion impact. With full men's wear detailing: front flap pockets, three-button sleeves and notched single breasted collar, this is sure to become a staple in her uniform wardrobe.

Polyester. Imported. Machine wash.

P9108

E

2T-4T	MA	
4-6X	UA	●
7-14	XA	●
16-20	XD	●
10.5-20.5	XH	

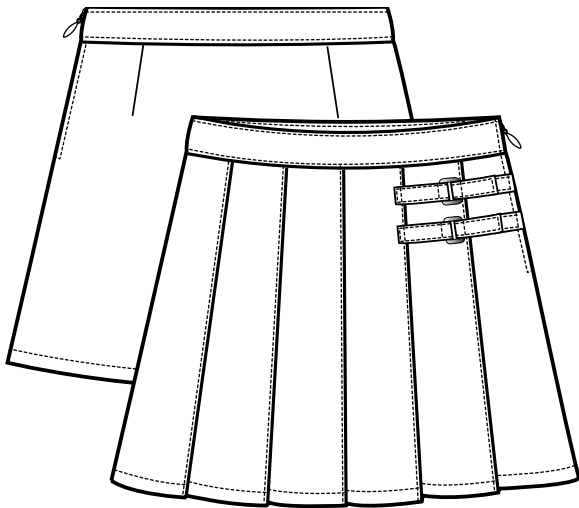
GIRLS SCOOTERS/SKIRTS



E9350 Rhinestone Pocket Blouse
X9230 Buckle Pocket Scooter

page 16
page 34

GIRLS SCOOTERS/SKIRTS



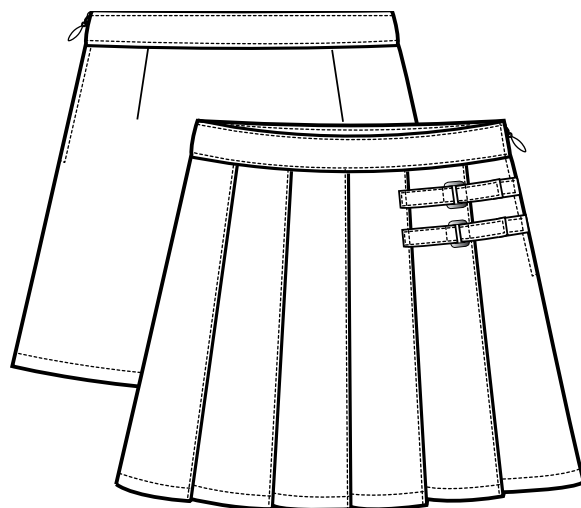
TWO-TAB SCOOTER

This pleated scooter with hidden sport shorts has two buckle tabs at the top for subtle detail.

Polyester. Imported. Machine wash.

X9103

		E	G	F	H	K	J
2T-4T	MA	S	S				
4-6X	UA	S	S	S	●	●	●
7-14	XA	S	S	S	●	●	●
16-20	XD	S	S	S	●	●	●
10.5-20.5	XH	S	S	S	●	●	●
38P-42P	GK	●	●				



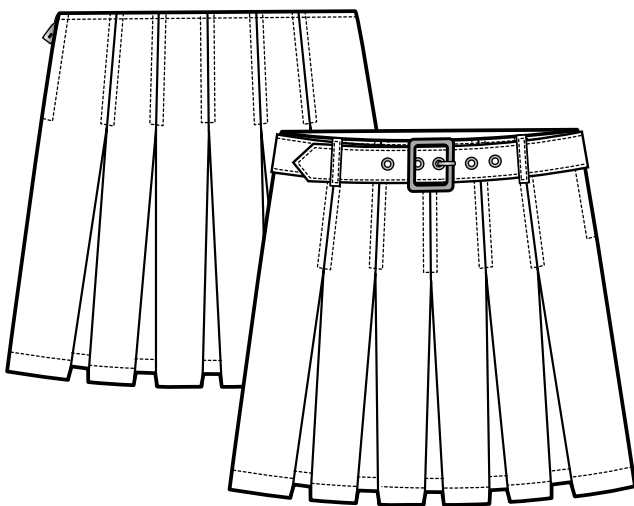
PLAID TWO-TAB SCOOTER

A classic look, this plaid scooter is comfortable in the classroom or at recess. The scooter design allows the student to have the great look of a skirt while offering the versatility of shorts. Two side buckles add style to this timeless silhouette.

Polyester. Imported. Machine wash.

X9110

		BLUE GOLD	BLUE RED	NAVY RED	BURGUNDY	GREEN	BROWN
2T-4T	MA						
4-6X	UA	S	S	S	S	S	S
7-14	XA	S	S	S	S	S	S
16-20	XD	S	S	S	S	S	S
10.5-20.5	XH	●	●	●	●	●	●
38P-42P	GK						



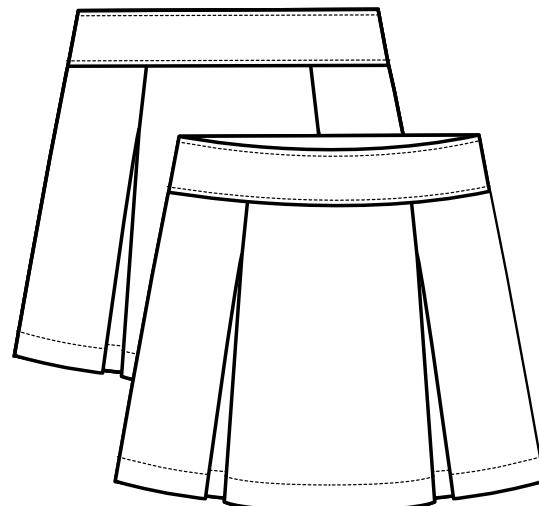
PLEATED SCOOTER WITH SQUARE BUCKLE BELT

Our fashion-forward design answers the demands of today's stylish and active girls. Comfortable jersey sport shorts are hidden under a hip polyester pleated skirt with mock belt and side zip closure.

Polyester. Imported. Machine wash.

X9059

		E	G	F	J
2T-4T	MA				
4-6X	UA	S	S	●	●
7-14	XA	S	S	●	●
16-20	XD	S	S	●	●
10.5-20.5	XH	●	●	●	●



KICK PLEAT SCOOTER

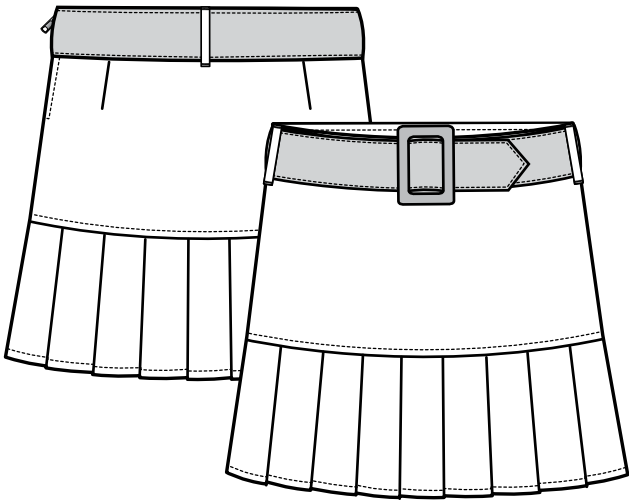
A fashion innovation for girls who want to stay active without sacrificing style. Comfortable sport shorts are hidden under its double kick pleats.

Polyester. Imported. Machine wash.

X9062

		E	G
	S		
4-6X	UA	●	●
7-14	XA	●	●
16-20	XD	●	●
10.5-20.5	XH	●	●

GIRLS SCOOTERS/SKIRTS

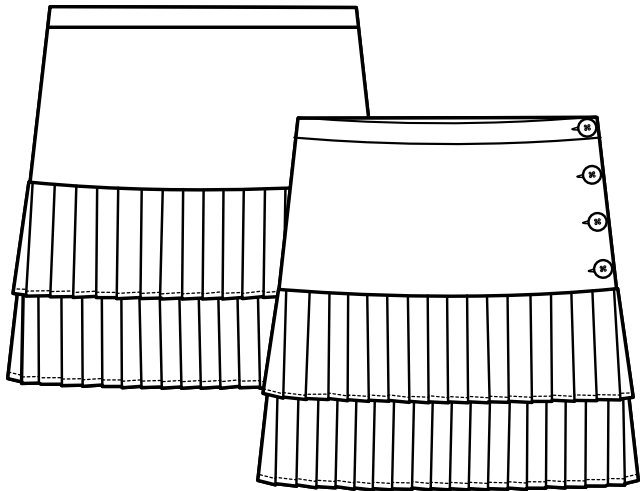


BELTED PLEATED HEM SCOOTER

This pull on scooter offers comfort and style. A-line smooth yoke with a row of perma pleats at the bottom. Patent leather belt.

Polyester. Imported. Machine wash

X9202		E	G
2T-4T	MA		
4-6X	UA	●	●
7-14	XA	●	●
16-20	XD	●	●
10.5-20.5	XH		

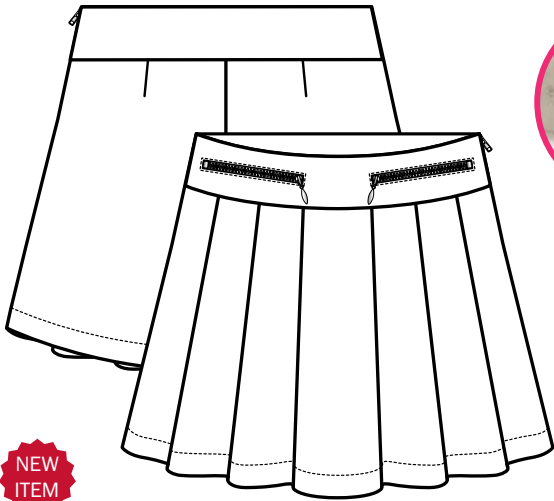


DOUBLE PLEATED SCOOTER

It seems borrowed from the silver screen, but it's every bit today's style. Our side buttoned scooter with not one, but two rows of pleats steals the scene at school or any occasion that calls for tailored chic.

Polyester. Imported. Machine wash.

X9209		E	G	F
2T-4T	MA			
4-6X	UA	●	●	●
7-14	XA	●	●	●
16-20	XD	●	●	●
10.5-20.5	XH			



NEW
ITEM

ZIPPERED WAISTBAND PLEATED SCOOTER

Newest addition to her scooter collection this cutie has front pleats, darted back and full side zip for easy on-off. And it's accented with two little faux zippers for a fun look.

Polyester. Imported. Machine wash.

X9231		E	G
2T-4T	MA		
4-6X	UA	●	●
7-14	XA	●	●
16-20	XD	●	●
10.5-20.5	XH		



NEW
ITEM

BUCKLE POCKET SCOOTER

Here is 5-pocket jean styling on a simple a-line silhouette. And it's made in smart stretch gabardine to keep it looking crisp all day long. Super easy to wear, and looks great especially with the silver buckle trimmed front pockets.

Rayon, nylon, spandex. Imported. Machine wash.

X9230		E	G
2T-4T	MA		
4-6X	UA	●	●
7-14	XA	●	●
16-20	XD	●	●
10.5-20.5	XH		

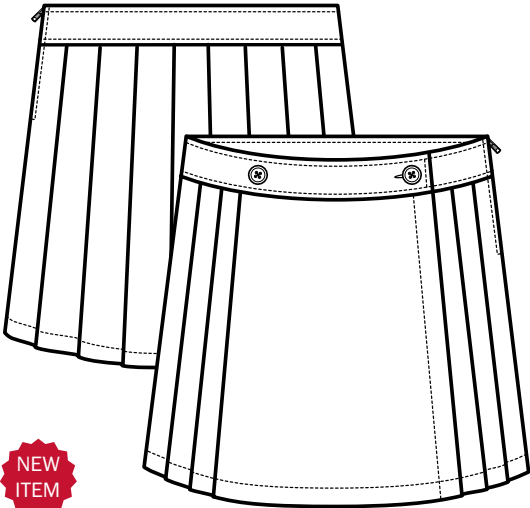


left to right:

- A9459** Stretch Pique Polo with Polka Dot Neck Binding
- K9460** Polka Dot Straight Leg Pant
- E9320** Short Sleeve Peter Pan Blouse
- Y9225** Polka Dot Belted Jumper
- E9330** Rhinestone Cuff Blouse
- X9227** Polka Dot Belted Scooter

- page 10
- page 26
- page 13
- page 43
- page 16
- page 37

GIRLS SCOOTERS/SKIRTS



adjustable waist

SOFT HAND
FINISH

NEW
ITEM

PLEATED SCOOTER

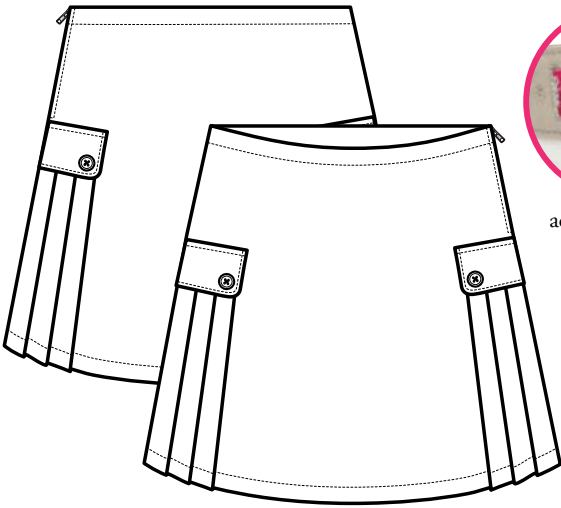
Another great scooter that is destined to become a classic. Soft brushed finish and flat front styling with pleats on the back and sides. Fully side zipped for easy on/off.

Polyester. Imported. Machine wash.

X9228

E G

2T-4T	MA		
4-6X	UA	●	●
7-14	XA	●	●
16-20	XD	●	●
10.5-20.5	XH		



adjustable waist

ADJUSTABLE WAIST SIDE PLEATED SCOOTER

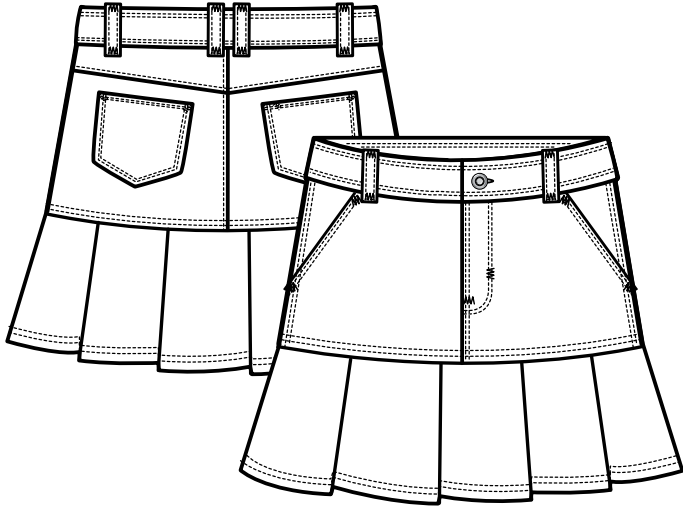
Sweet and sassy, our newest scooter has side perma pleats secured with button down flap details. Convenient side zip and adjustable waist for easy fit.

Cotton blend with Wrinkle No More® fabric. Imported. Machine wash.

X9225

E G

2T-4T	MA		
4-6X	UA	●	●
7-14	XA	●	●
16-20	XD	●	●
10.5-20.5	XH		



PLEATED HEM SCOOTER

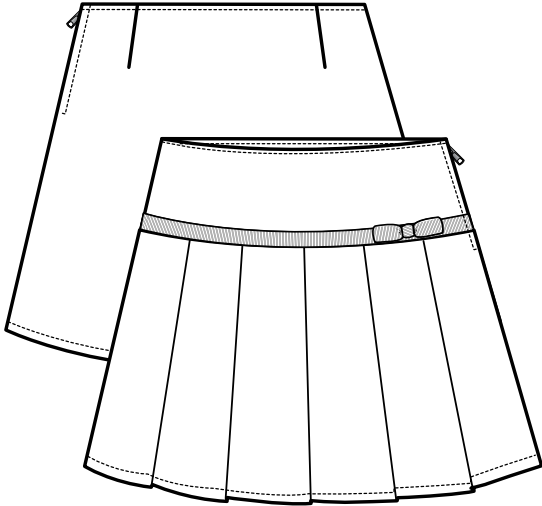
A classic scooter with slash pockets on the front and patch pockets on the back, is given a punch of fun with a pleated bottom. A button and zipper closure and hidden sport shorts underneath complete this style.

Cotton blend with Wrinkle No More™ fabric. Imported. Machine wash.

X9093

E G F

2T-4T	MA			
4-6X	UA	●	●	●
7-14	XA	●	●	●
16-20	XD	●	●	●
10.5-20.5	XH	●	●	●



PLEATED SCOOTER WITH GROSGRAIN RIBBON

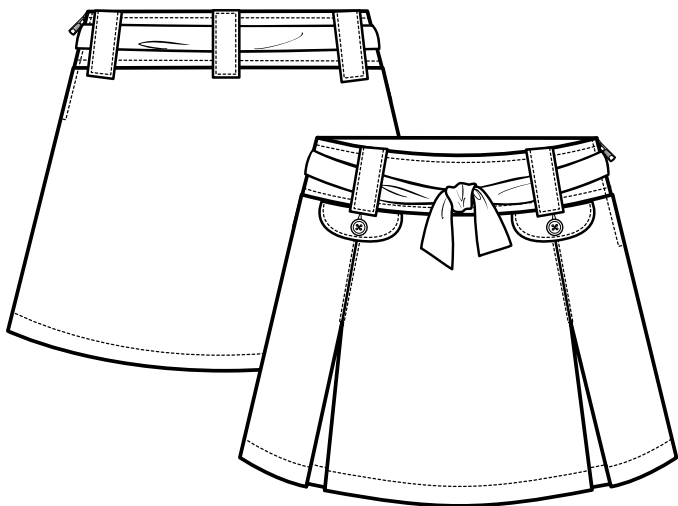
This adorable little twill scooter has a precious grosgrain ribbon trim and bow detail.

Cotton blend with Wrinkle No More™ fabric. Imported. Machine wash.

X9129

E G F

2T-4T	MA	●	●	●
4-6X	UA	●	●	●
7-14	XA	●	●	●
16-20	XD	●	●	●
10.5-20.5	XH			



FLAP POCKET TWILL SCOOTER

It's all the details...our newest twill scooter sports buttoned flat front pockets and sash tie self-belt.

Cotton blend with Wrinkle No More™ fabric. Imported. Machine wash.

X9213

E **G**

2T-4T	MA		
4-6X	UA	●	●
7-14	XA	●	●
16-20	XD	●	●
10.5-20.5	XH		



rhinestone
button

**NEW
ITEM**

POLKA DOT BELTED SCOOTER

From our Signature Dot Collection...this scooter will become a staple in her school wardrobe. Buttoned front pockets, smart inverted pleats... and of course the polka dot belt with a cute little bow right in its center.

Cotton blend with Wrinkle No More™ fabric. Imported. Machine wash.

X9227

E **G**

2T-4T	MA		
4-6X	UA	●	●
7-14	XA	●	●
16-20	XD	●	●
10.5-20.5	XH		



P9112 Pleated Blazer

E9284 Short Sleeve Button Down Oxford with Darts

F9003 Adjustable Plaid Cross Tie

X9228 Pleated Scooter

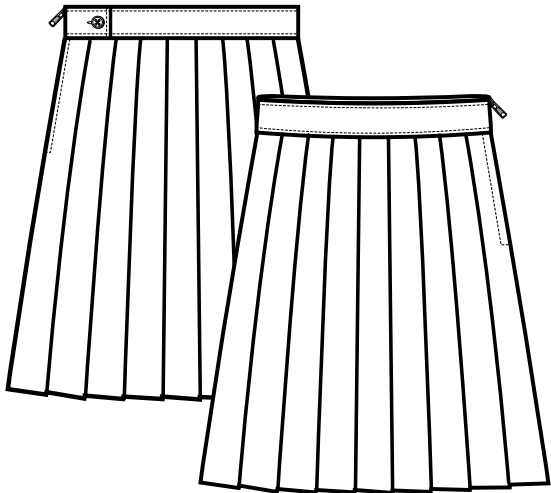
page 31

page 14

page 85

page 36

GIRLS SCOOTERS/SKIRTS



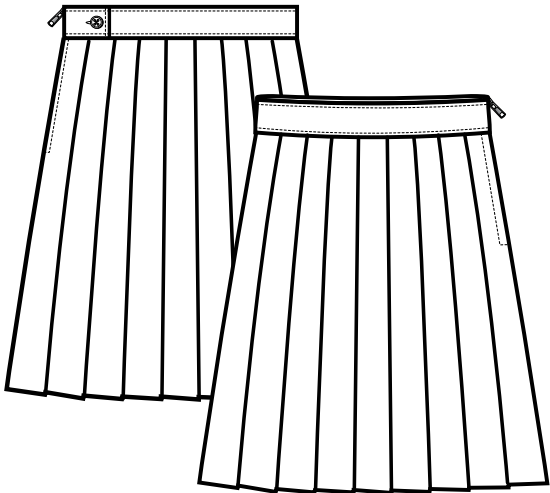
PLEATED SKIRT

This one has it all: a classic cut, permanent pleats, side zipper and one button closure.

Polyester. Imported. Machine wash.

V9000

		E	G	F	H	J
2T-4T	MA					
4-6X	UA	S	S	●	●	
7-14	XA	S	S	●	●	
16-20	XD	S	●	●	●	●
10.5-20.5	XH	●	●	●	●	●



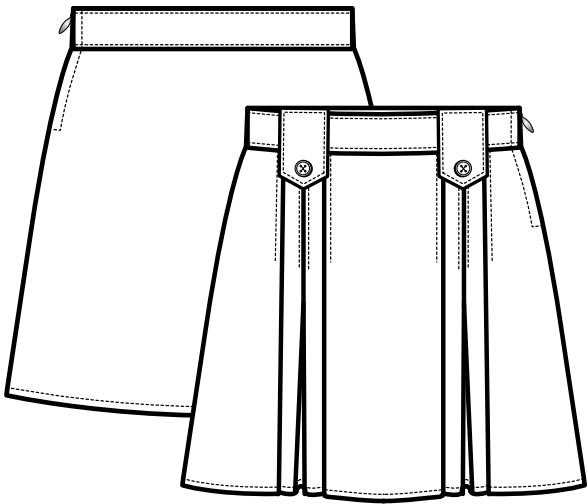
PLAID PLEATED SKIRT

This classic pleated skirt is absolutely timeless, with permanent pleats, side zipper and a one-button closure.

Polyester. Imported. Machine wash.

V9002

			BLUE GOLD	BLUE RED	NAVY RED	BURGUNDY	GREEN	BROWN
2T-4T	MA							
4-6X	UA	S	S	S	S	S	S	S
7-14	XA	S	S	S	S	S	S	S
16-20	XD	S	S	S	S	S	S	S
10.5-20.5	XH	●	●	●	●	●	●	●



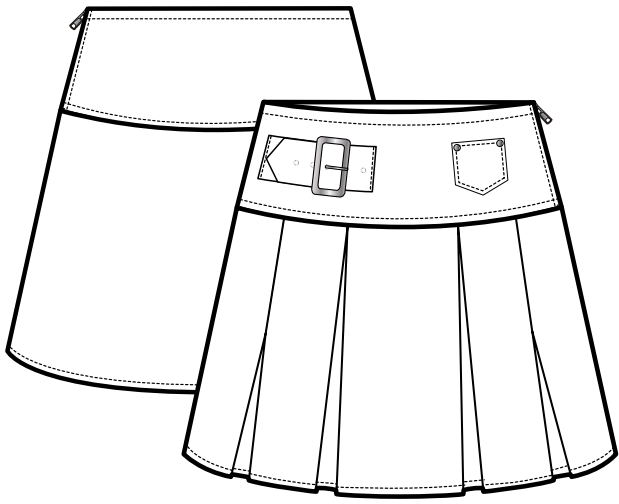
FRONT PLEATED SKIRT WITH TABS

Stitched-down permanent pleats, decorative button tabs on the front, and a convenient pull on style make this skirt a true classic.

Polyester. Imported. Machine wash.

V9011

		E	G	F	J	K
2T-4T	MA					
4-6X	UA	S	S	S	●	●
7-14	XA	S	S	S	●	●
16-20	XD	S	S	S	●	●
10.5-20.5	XH	●	●	●	●	●



FRONT PLEATED COIN POCKET SKIRT

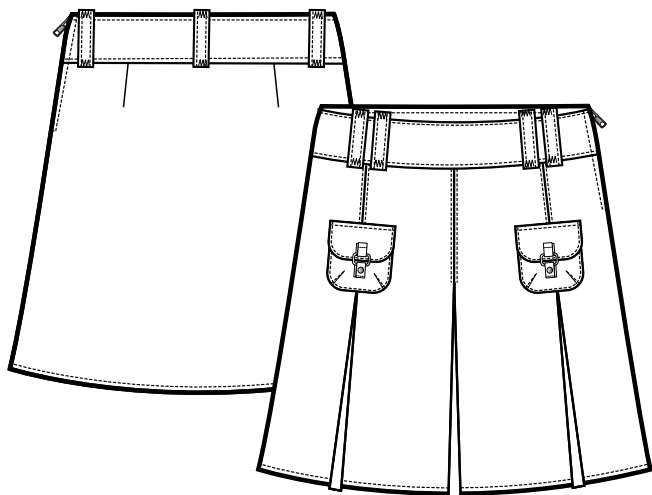
A must have for school, this skirt has a jean-inspired pocket with studs on one hip, and a mock belt closure on the other. A box pleated front rounds out the style.

Polyester. Imported. Machine wash.

V9127

		E	G
2T-4T	MA		
4-6X	UA	●	●
7-14	XA	●	●
16-20	XD		
10.5-20.5	XH		

GIRLS SCOOTERS/SKIRTS



BUCKLE POCKET TWILL SKIRT

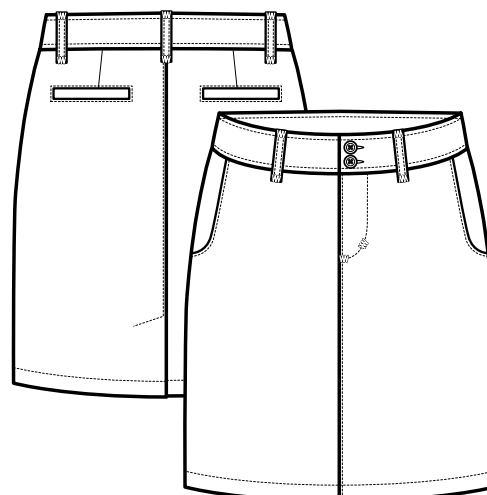
Fun and fashionable, this hip twill skirt has three kick pleats in front and two mini front pockets with silver buckles. Wide 2" waistband with double belt loops.

Cotton blend with Wrinkle No More® fabric. Imported. Machine wash.

V9096

E G

2T-4T	MA		
4-6X	UA	●	●
7-14	XA	●	●
16-20	XD	●	●
10.5-20.5	XH		



KNEE LENGTH TWILL STRAIGHT SKIRT

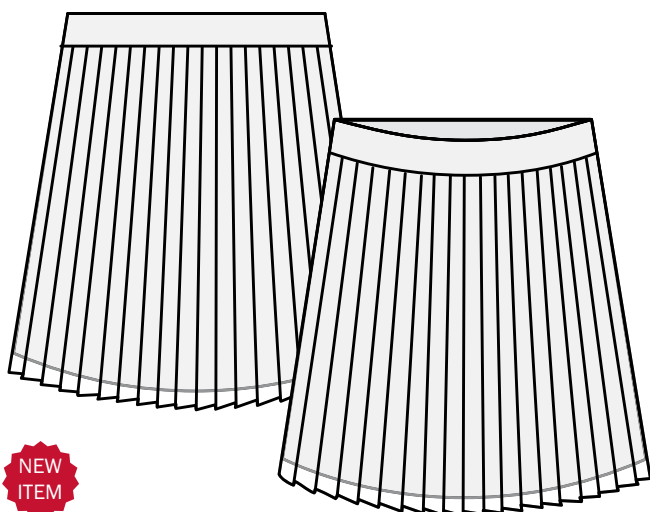
The newest staple of her school wardrobe...this is the skirt destined to become a classic and her go to fave. Simple straight silhouette with pockets, front zip and "jean" detailing.

Cotton blend with Wrinkle No More® fabric. Imported. Machine wash.

V9216

E G

2T-4T	MA		
4-6X	UA	●	●
7-14	XA	●	●
16-20	XD	●	●
10.5-20.5	XH		



**NEW
ITEM**

PLEATED CHIFFON SKIRT

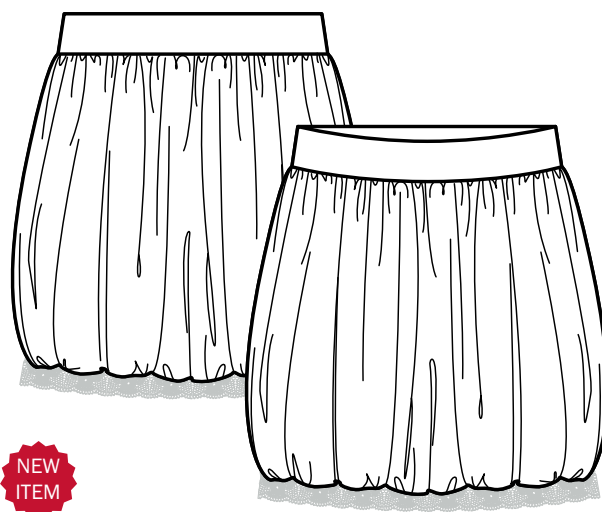
A fabulous take on the basic pleated skirt...Slightly longer length, simple lines, fully pleated, and all done in soft perma pleat chiffon! Gorgeous.

Polyester. Imported. Machine wash.

V9220

E

2T-4T	MA		
4-6X	UA	●	
7-14	XA	●	
16-20	XD	●	
10.5-20.5	XH		



**NEW
ITEM**

LACE HEM CHIFFON BUBBLE SKIRT

This is a school uniform? Most definitely! For the girl who loves feminine looks in her closet, this is the perfect blend of mandated uniform and fashion she will adore. It's a bell of soft (navy) chiffon, trimmed with a wisp of lace around the hem.

Polyester. Imported. Machine wash.

V9221

E

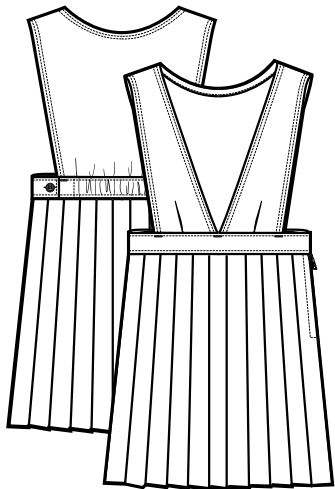
2T-4T	MA		
4-6X	UA	●	
7-14	XA	●	
16-20	XD	●	
10.5-20.5	XH		

GIRLS JUMPERS



E9323 Long Sleeve Peter Pan Blouse with Lace Trim
Y9075 Double Buckle Tab Jumper

page 14
page 41



V-NECK PLEATED JUMPER

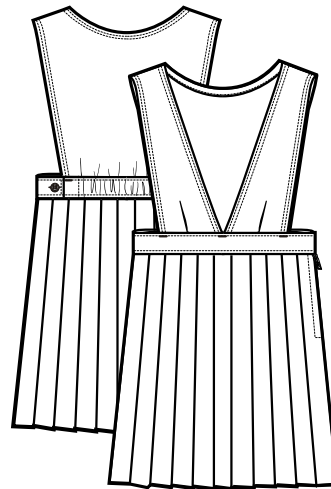
Classic style reinvented...our v-neck pleated jumper has a full circle of permanent pleats that will look fresh all day long. Hidden side zipper with button closure.

Polyester. Imported. Machine wash.

Y9000

E G F H K J

2T-4T	MA	S	S				
4-6X	UA	S	S	●	●	●	●
7-14	XA	S	S	●	●	●	●
16-20	XD	S	S	●	●	●	●
10.5-20.5	XH	●	●	●	●	●	●



PLAID V-NECK PLEATED JUMPER

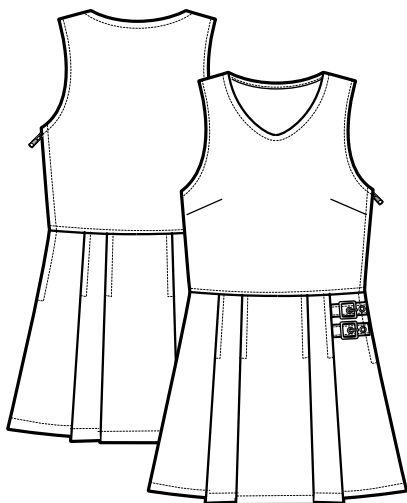
Our timeless v-neck jumper in plaid has those convenient permanent pleats, a hidden side zipper and button closure.

Polyester. Imported. Machine wash.

Y9002

BLUE GOLD BLUE NAVY BURGUNDY GREEN BROWN
G F J B C H

2T-4T	MA						
4-6X	UA	S	S	S	S	S	S
7-14	XA	S	S	S	S	S	S
16	XD	S			S		
10.5-20.5	XH	●	●	●	●	●	●



DOUBLE BUCKLE TAB JUMPER

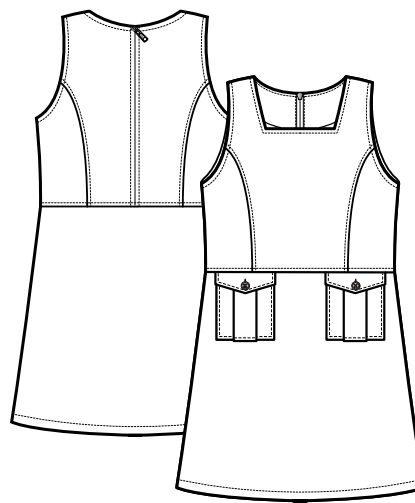
A classy jumper with reinvented styling that always looks great. It includes a double self-fabric belt with antique brass buckles and a concealed side zipper.

Polyester. Imported. Machine wash.

Y9075

E G F

2T-4T	MA			
4-6X	UA	S	S	●
7-14	XA	S	S	●
16-20	XD	●	●	●
10.5-20.5	XH	●	●	



SQUARE NECK JUMPER

A great new style that is easy to wear and easy care. A flattering square neckline pleated patch pockets and princess seams make this style a winner.

Polyester. Imported. Machine wash.

Y9019

E G

2T-4T	MA		
4-6X	UA	●	●
7-14	XA	●	●
16-20	XD	●	●
10.5-20.5	XH		

GIRLS JUMPERS



BUCKLE POCKET JUMPER

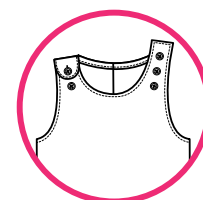
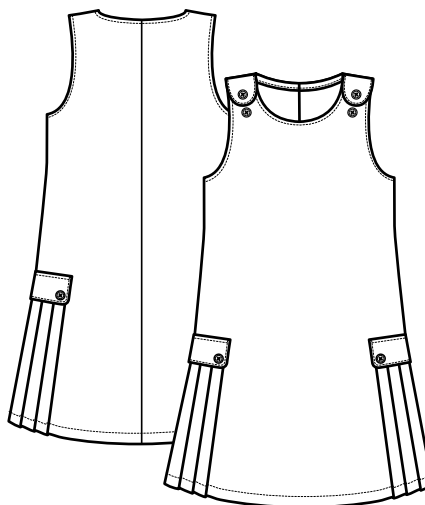
A key component of our “Buckle collection” our stretch gabardine jumper has a front inverted pleat, high V-neck, and silver buckle trimmed pockets.

Rayon, nylon, spandex. Imported. Machine wash.

Y9227



2T-4T	MA		
4-6X	UA	●	●
7-14	XA	●	●
16-20	XD		
10.5-20.5	XH		



adjustable strap detail

ADJUSTABLE SIDE PLEATED JUMPER

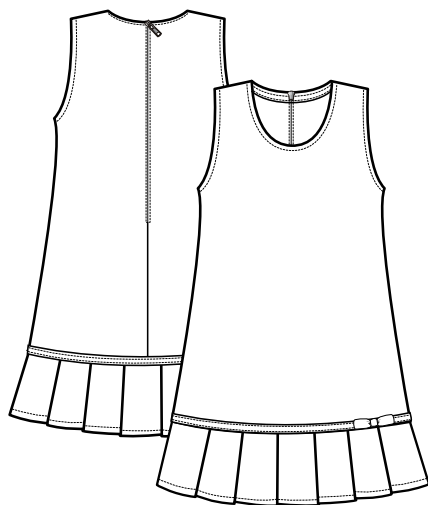
Perfect companion for our newest blouses, this jumper will always be in style with its jaunty side pleats, button flap detailing and simple a-line shape. Plus...it has adjustable shoulders to lengthen as the child gets taller!

Cotton blend. Imported. Machine wash.

Y9222



2T-4T	MA		
4-6X	UA	●	●
7-14	XA	●	●
16-20	XD		
10.5-20.5	XH		



PLEATED HEM JUMPER

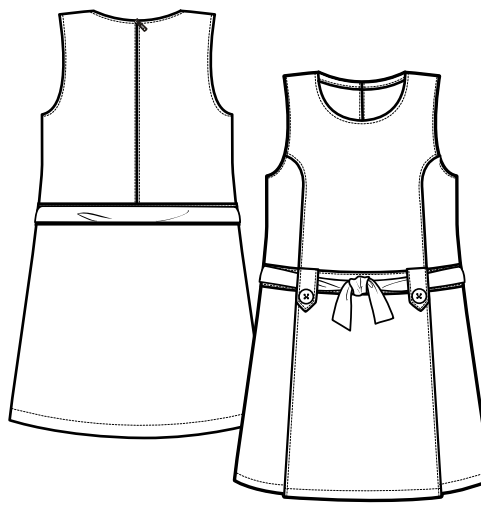
An easy-to-wear style with pleated hem and cute grosgrain ribbon finished with a bow.

Cotton blend with Wrinkle No More™ fabric. Imported. Machine wash.

Y9098



2T-4T	MA	S	S	
4-6X	UA	S	S	●
7-14	XA	S	S	●
16-20	XD	●	●	
10.5-20.5	XH			



SELF-FABRIC SASH JUMPER

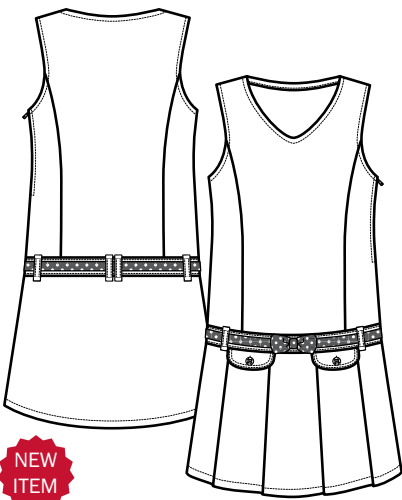
Fitted and flared for easy wearing all day long...this cute jumper is seamed down the front for great fit. Add belt loop detailing and fabric sash and she's good to go.

Cotton blend with Wrinkle No More™ fabric. Imported. Machine wash.

Y9208



2T-4T	MA		
4-6X	UA	●	●
7-14	XA	●	●
16-20	XD		
10.5-20.5	XH		



rhinestone
button

POLKA DOT BELTED JUMPER

Destined to be another fave from our Signature Dot Collection...this jumper does it right with slimming darts, pleated front, cute pocket flaps and of course....the polka dot belt!

Cotton blend with Wrinkle No More™ fabric. Imported. Machine wash.

Y9225

E G

2T-4T	MA		
4-6X	UA	●	●
7-14	XA	●	●
16-20	XD		
10.5-20.5	XH		



E9320 Short Sleeve Peter Pan Blouse
Y9225 Polka Dot Pleated Jumper

page 13
page 43

GIRLS DRESSES



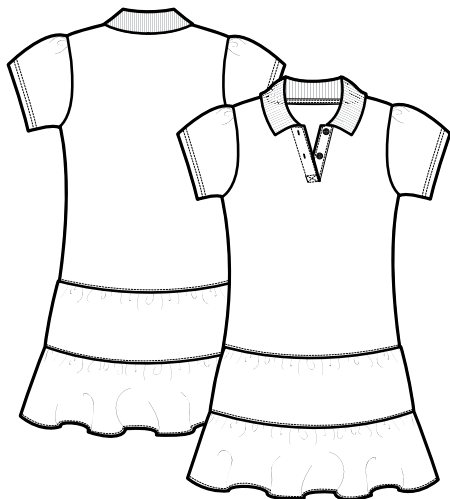
left to right:

Z9202 Grommet Belt Polo Dress

Z9201 2 For Pleated Dress

page 45

page 45



RUFFLED PIQUE DRESS

A winning item for any sporty little girl, this pique dress has a classic polo top and a flirty ruffle skirt bottom.

Cotton blend. Imported. Machine wash.

Z9018



2T-4T	MA	●	●	●
4-6X	UA	●	●	●
7-14	XA	●	●	●
16-20	XD			
10.5-20.5	XH			



TWILL SAFARI SHIRTDRESS

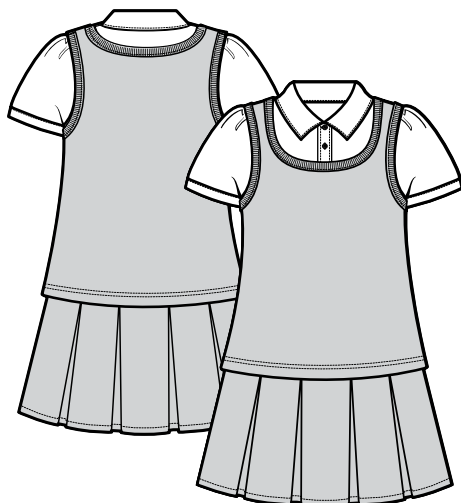
Super soft and super comfortable, the shirtdress sports authentic detailing and flowing easy shape of safari fashion. With little self sash and full buttons down the front.

Cotton blend with Wrinkle No More™. Imported. Machine wash.

Z9200



2T-4T	MA		
4-6X	UA	●	●
7-14	XA	●	●
16-20	XD		
10.5-20.5	XH		



2 FOR PLEATED DRESS

Don't be fooled; this dress is really one piece, made to look like two. Easy wardrobing, especially for the younger set, it has tailored blouse collar and sleeves, permanently attached to a full body pleated dress.

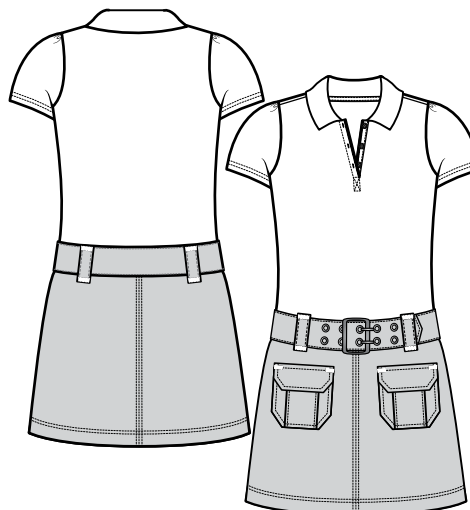
Top: Cotton blend. Vest: 1x1 Rib. Cotton blend.

Bottom: Polyester. Imported. Machine wash.

Z9201



2T-4T	MA	
4-6X	UA	●
7-14	XA	●
16-20	XD	
10.5-20.5	XH	



GROMMET BELT POLO DRESS

The great pretender! What looks like a skirt and top, really is a one piece dress that's super easy to wear and care for. With safari pockets and self belt.

Polyester. Imported. Machine wash.

Z9202



2T-4T	MA	
4-6X	UA	●
7-14	XA	●
16-20	XD	
10.5-20.5	XH	

GIRLS GYM



P9105 Girls Core Fleece Hoodie
A9423 Interlock Knit with Picot Collar
H9061 Twill Bermuda Short

page 47
page 7
page 23



GIRLS CORE FLEECE HOODIE

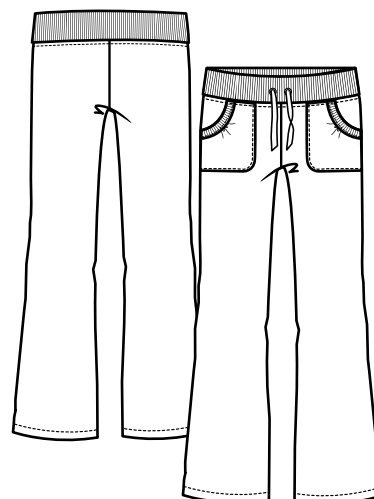
Soft and cozy for those chilly days, our hoodie is cute and sporty with its attached hood decorative button detail. Knit detailing on the cuffs, pockets and bottom. Full zip.

Cotton blend. Imported. Machine wash.

P9105

E J

2T-4T	MA	●	●
XS(4/5)-S(6/6X)	UU	●	●
M(7/8)-XL(14/16)	XY	●	●



GIRLS CORE FLEECE PANT

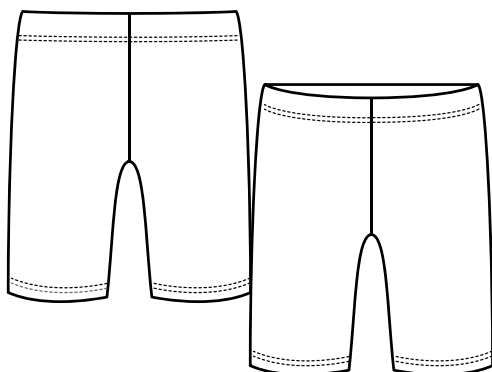
So comfortable she will want to wear it every day, and styled just right so she can, our fleece pant is perfect for class or for gym. Comes with mock drawstring, easy squared off pockets and full flared leg, make this her go to pant.

Cotton blend. Imported. Machine wash.

K9408

E J

2T-4T	MA	●	●
XS(4/5)-S(6/6X)	UU	●	●
M(7/8)-XL(14/16)	XY	●	●



BIKE SHORT

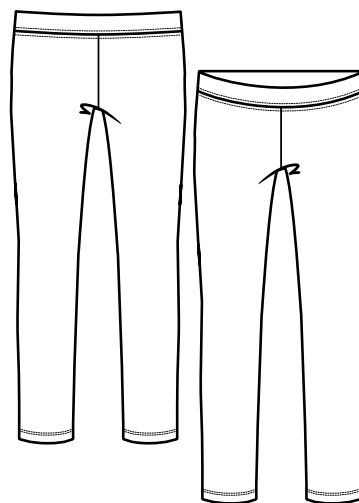
Great for the active girl on the go. Just pull on our bike short underneath a skirt or jumper and you are off and running!

Cotton/spandex blend. Imported. Machine wash.

H9006

E G

2T-4T	MA	●	●
4-6X	UA	●	●
7-14	XA	●	●
16-20	XD	●	●



ANKLE LENGTH LEGGING

Our new basic is borrowed from the fashion world and sure to be a staple for school. This simple, classic legging works as a layering piece with dresses, skirts, skirts and scooters.

Cotton/spandex blend. Imported. Machine wash.

K9448

E G

2T-4T	MA	●	●
4-6X	UA	●	●
7-14	XA	●	●
16-20	XD	●	●

BOYS POLOS



left to right:

A9084 Pique Polo with Knit Collar
H9202 Adjustable Waist Pleated Short
P9104 Hooded Sweatshirt
A9084 Pique Polo with Knit Collar
H9201 Boy's Utility Pocket Short

page 49
page 56
page 64
page 49
page 57



PIQUE POLO WITH KNIT COLLAR

This textured, heavyweight polo shirt makes a boy feel confident to get ready for school everyday. As he buttons up the three-button center placket, he knows it will be a great day.

Cotton/polyester. Imported. Machine wash.

A9084		A	B	C	E	N	H	K	L	J	F	P	S	T	U	D	V
2T-4T	BA	S	S	S	S	S	●	●	●	●	●	●	●	●	●	●	●
4-7	CA	S	S	S	S	S	S	S	S	S	S	S	S	●	●	●	●
8-14	HB	S	S	S	S	S	S	S	S	S	S	S	S	●	●	●	●
16-20	HJ	S	S	S	S	S	S	S	S	S	S	S	S	●	●	●	●
10-20H	HK	S	S	S	S	S	●	S	●	●	S	●	●	●	●	●	●



LONG SLEEVE PIQUE POLO WITH KNIT COLLAR

This textured, heavyweight polo shirt makes a boy feel confident to get ready for school everyday. As he buttons up the three-button center placket, he knows it will be a great day.

Cotton/polyester. Imported. Machine wash.

A9085		A	B	C	E	N	H	K	L	J	F	P	S
2T-4T	BA	●	●	●	●	●	●	●	●	●	●	●	●
4-7	CA	S	S	S	S	S	S	S	●	●	●	●	●
8-14	HB	S	S	S	S	S	S	S	●	●	●	●	●
16-20	HJ	S	S	S	S	S	S	S	●	●	●	●	●
10-20H	HK	S	S	●	●	●	●	●	●	●	●	●	●

BOYS POLOS



INTERLOCK KNIT POLO

A true updated basic, this heavyweight interlock knit polo is in a super-soft blend and features a three-button placket and flat knit ribbed cuffs.

Cotton blend. Imported. Machine wash.

A9086

A	B	C	E
---	---	---	---

2T-4T	BA				
4-7	CA	S	S	S	●
8-14	HB	S	S	S	●
16-20	HJ	S	S	S	●
10-20H	HK	S	●	●	●



LONG SLEEVE INTERLOCK KNIT POLO

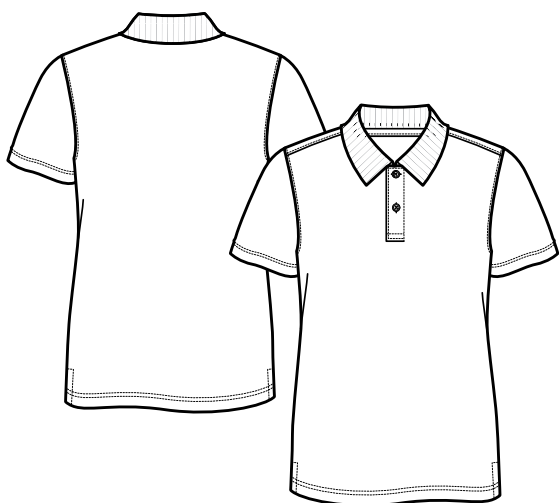
A true updated basic, this heavyweight interlock knit polo is in a super-soft blend and features a three-button placket and flat knit ribbed cuffs.

Cotton blend. Imported. Machine wash.

A9087

A	B	C	E
---	---	---	---

2T-4T	BA				
4-7	CA	S	S	S	●
8-14	HB	S	S	S	●
16-20	HJ	S	S	S	●
10-20H	HK	●	●	●	●



SPORT POLO

Our newest addition to the boy's line has all the traditional polo details, but with the added feature of "stay cool" fabric. It will actually keep him cooler and more comfortable on warmer days or doing sports.

Cotton blend. Imported. Machine wash.

A9450

A	B	E	N
---	---	---	---

2T-4T	BA				
4-7	CA	●	●	●	●
8-14	HB	●	●	●	●
16-20	HJ	●	●	●	●
10-20H	HK				



A9087 Long Sleeve Interlock Knit Polo
K9204 Belted Cargo Pocket Pant

page 50
page 60

• Available colors in this size (assortment) S Available by size and assortment

BOYS WOVENS



E9004 Long Sleeve Classic Dress Shirt
F9012 Adjustable Plaid Tie
K9461 Flat Front Belted Dress Pant

page 53
page 85
page 60



SHORT SLEEVE CLASSIC DRESS SHIRT

A true classic for both its great style and value, our poplin dress shirt features an expandable collar, front pocket, and is made from easy care Wrinkle No More™ fabric.

Cotton blend with Wrinkle No More™ fabric. Imported. Machine wash.

E9005

		A	B	C
2T-4T	BA	S	S	S
4-7	CA	S	S	S
8-14	HB	S	S	S
16-20	HJ	S	S	S
10-20H	HK	S	S	S
LH-2XLH	JN	●		



SHORT SLEEVE OXFORD SHIRT

Our crisp oxford shirts are made from our easy care Wrinkle No More™ fabric. An expandable collar offers extra comfort and the front pocket finishes off the classic look.

Cotton blend with Wrinkle No More™ fabric. Imported. Machine wash.

E9003

		A	B	C
2T-4T	BA	●		
4-7	CA	S	S	●
8-14	HB	S	S	●
16-20	HJ	S	S	●
10-20H	HK	●	●	●



LONG SLEEVE CLASSIC DRESS SHIRT

A true classic for both its great style and value, our poplin dress shirt features an expandable collar, front pocket, and is made from easy care Wrinkle No More™ fabric.

Cotton blend with Wrinkle No More™ fabric. Imported. Machine wash.

E9004

		A	B	C
2T-4T	BA	S	S	S
4-7	CA	S	S	S
8-14	HB	S	S	S
16-20	HJ	S	S	S
10-20H	HK	S	S	S
LH-2XLH	JN	●		



LONG SLEEVE OXFORD SHIRT

Our crisp oxford shirts are made from our easy care Wrinkle No More™ fabric. An expandable collar offers extra comfort and the front pocket finishes off the classic look.

Cotton blend with Wrinkle No More™ fabric. Imported. Machine wash.

E9002

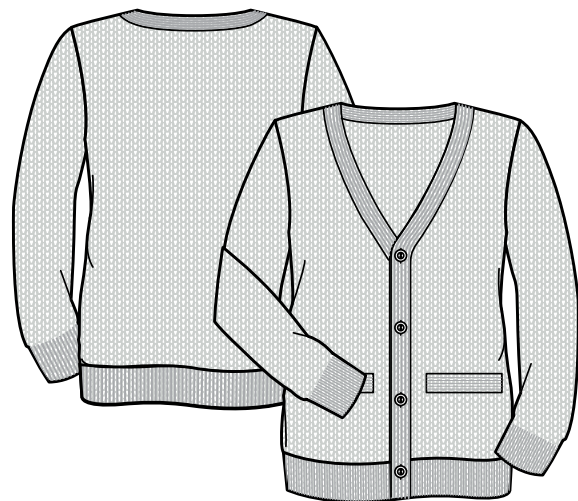
		A	B	C
2T-4T	BA	●		
4-7	CA	S	S	●
8-14	HB	S	S	●
16-20	HJ	S	S	●
10-20H	HK	●	●	●

BOYS SWEATERS



C9016 V-Neck Sweater Vest
 E9002 Long Sleeve Oxford Shirt
 F9012 Adjustable Plaid Tie
 K9464 Straight Leg Flat Front Pant with Adjustable Waist

page 55
 page 53
 page 85
 page 60



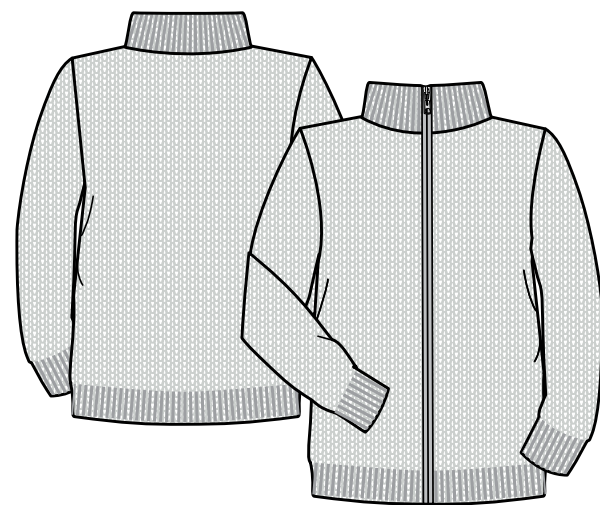
V-NECK ANTI-PILL CARDIGAN

An old classic with a modern take, this anti-pill cardigan sports the traditional v-neck, front pockets and button down front, make this sweater a fantastic value.

Acrylic. Imported. Machine wash.

C9000

		E	F	J	K	H	M	N
2T-4T	BA	●						
4-7	CA	S	●	●	S	●	●	●
8-14	HB	S	●	●	S	●	●	●
16-20	HJ	S	●	●	S	●	●	●
10-20H	HK	●						



ZIPPER FRONT SWEATER

This is our most versatile sweater – designed to be worn as a layering piece or on its own in place of a jacket. Easy on/off full front zipper; ribbed mock neck, cuffs and bottom.

Acrylic. Imported. Machine wash.

C9200

		E
2T-4T	BA	●
4-7	CA	●
8-14	HB	●
16-20	HJ	●
10-20H	HK	●



NEW
ITEM

BASIC CARDIGAN

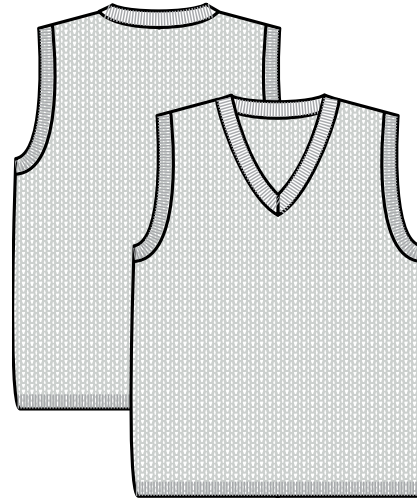
Our basic boy's cardigan is the perfect layering piece or transitional outerwear to complement his school wardrobe. With full button down front, double woven cuffs, hem and pocket trim. Special anti-pilling qualities keep it looking great throughout the entire school year.

Acrylic. Imported. Machine wash.

C9214

E K

2T-4T	BA		
4-7	CA	S	●
8-14	HB	S	●
16-20	HJ	S	●
10-20H	HK		



V-NECK SWEATER VEST

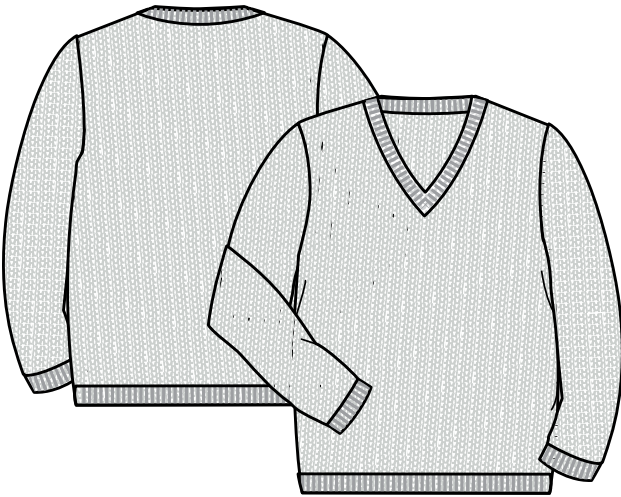
This sweater vest is a great addition to any students wardrobe. A comfortable fit with ribbed neckline and waist makes every kids look classy.

Acrylic. Imported. Machine wash. Unisex.

C9016

E K F

2T-4T	BA		
4-7	CA	S	S
8-14	HB	S	S
16-20	HJ	S	S
10-20H	HK	●	●



V NECK ANTI-PILL PULL OVER SWEATER

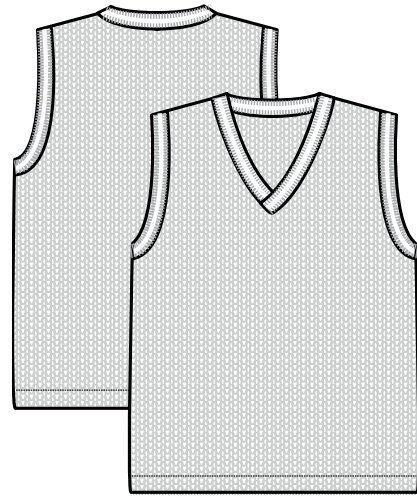
A true classic; fully fashioned with larger gauge knit detailing at the cuffs, v-neck and bottom. Super comfortable, and easy to layer over shirts and under jackets.

Acrylic. Imported. Machine wash.

C9015

E

2T-4T	BA	
4-7	CA	●
8-14	HB	●
16-20	HJ	
10-20H	HK	



VEST WITH WHITE STRIPE

For cold school days, this updated vest with a fun white stripe at the collar and at the arms perfectly fits the bill.

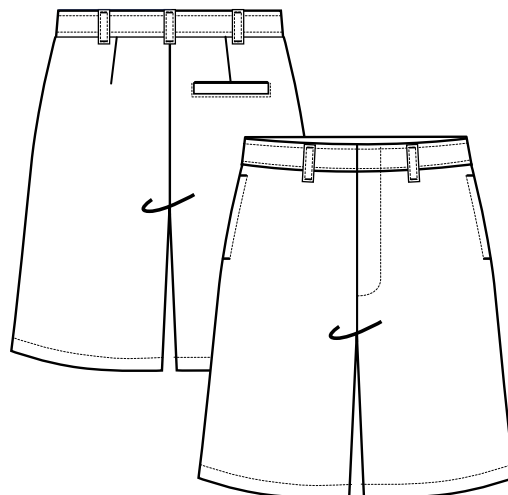
Cotton blend. Imported. Machine wash.

C9012

E

2T-4T	BA	
4-7	CA	●
8-14	HB	●
16-20	HJ	●
10-20H	HK	●

BOYS SHORTS



adjustable waist

BASIC FLAT FRONT SHORT

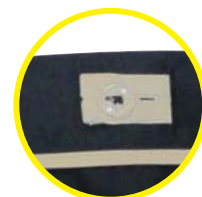
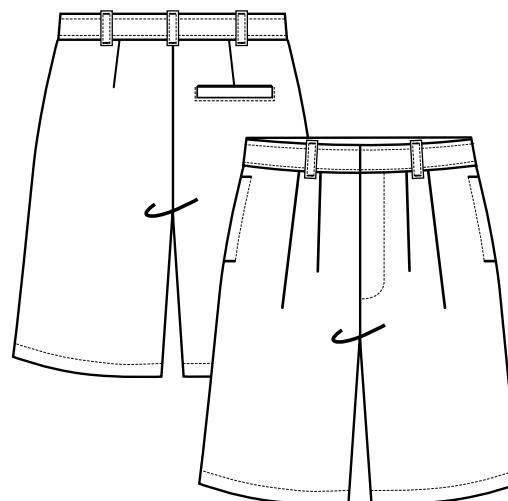
This cotton blend twill short falls to just above the knee. It features front pockets, a single back pocket, and a hook-and-eye closure perfect for school.

Cotton blend with Wrinkle No More™ fabric. Imported. Machine wash.

H9200



2T-4T	BA								
4-7	CA	S	S	S	●		●	●	
8-14	HB	S	S	S	●	●	●	●	●
16-20	HJ	S	S	S	●	●	●	●	●
10-20H	HK	S	S	●	●	●	●	●	●
4S-7S	CB								
8S-14S	HC								



adjustable waist

ADJUSTABLE WAIST PLEATED SHORT

Our cool, comfortable pleated short has side-seam pockets and a back welt pocket. A hook-and-eye closure finishes off the style.

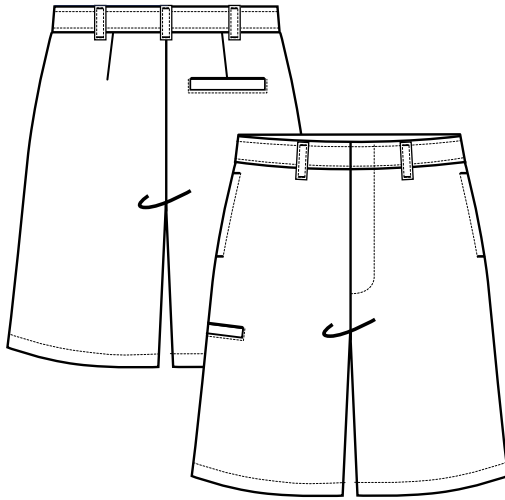
Cotton blend with Wrinkle No More™ fabric. Imported. Machine wash.

H9202



2T-4T	BA								
4-7	CA	S	S	●					
8-14	HB	S	S	●	●				
16-20	HJ	S	S	●	●				
10-20H	HK	S	S	●	●				
4S-7S	CB								
8S-14S	HC								

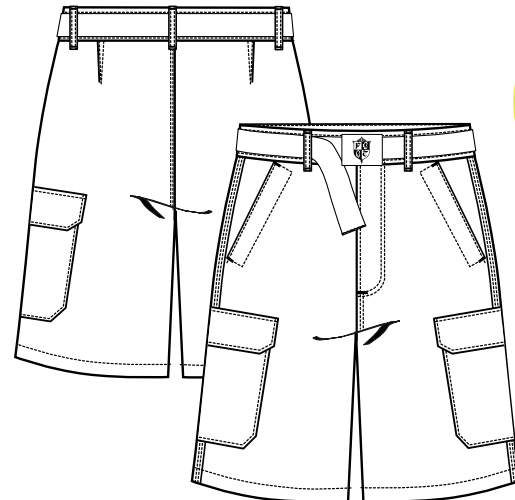
BOYS SHORTS



adjustable waist



utility pocket



belt detail

BOYS UTILITY POCKET SHORT

Now fashioned as a short, the utility short has become a classic in the school uniform lineup. Traditional side pockets with one extra for the phone or MP3, this short sports a slightly longer length and easy fit.

Cotton blend with Wrinkle No More™ fabric. Imported. Machine wash.

H9201



2T-4T	BA		
4-7	CA	●	●
8-14	HB	●	●
16-20	HJ	●	●
10-20H	HK	●	●
4S-7S	CB		
8S-14S	HC		



adjustable waist

SOFT HAND
FINISH

NEW
ITEM

PREPPY SHORT WITH COIN POCKET AND ADJUSTABLE WAIST

Shorts are fast becoming a staple in all school wardrobes, and this one will be a standout with flat front styling and clean lines. Soft hand finish for extra comfort.

Cotton blend with Wrinkle No More™. Imported. Machine wash.

H9225



2T-4T	BA		
4-7	CA	●	●
8-14	HB	●	●
16-20	HJ	●	●
10-20H	HK	●	●
4S-7S	CB		
8S-14S	HC		

BELTED CARGO POCKET SHORT

A very popular style, this short sports tailored cargo pockets designed specifically for school. The canvas belt features an antique –finished buckle.

Cotton blend with Wrinkle No More™. Imported. Machine wash.

H9209



2T-4T	BA		
4-7	CA	●	●
8-14	HB	●	●
16-20	HJ	●	●
10-20H	HK	●	●
4S-7S	CB		
8S-14S	HC		



P9104 Hooded Sweatshirt
E9005 Short Sleeve Classic Dress Shirt
H9200 Basic Flat Front Short

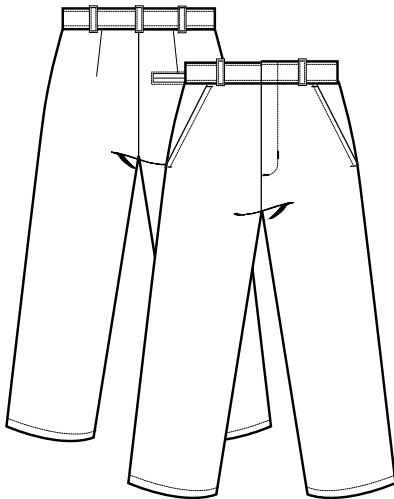
page 64
page 53
page 57

BOYS PANTS

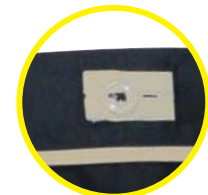
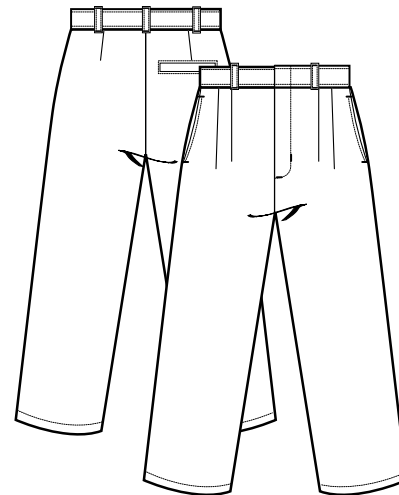


left to right:

E9002	Long Sleeve Oxford Shirt	page 53
F9012	Adjustable Plaid Tie (blue/red)	page 85
K9001	Adjustable Waist Double-Knee Pant	page 59
E9002	Long Sleeve Oxford Shirt	page 53
F9012	Adjustable Plaid Tie (blue/gold)	page 85
K9280	Adjustable Waist and Hem Flat Front Double-Knee Pant	page 59
C9000	V-Neck Anti-Pill Cardigan	page 54
E9002	Long Sleeve Oxford Shirt	page 53
F9012	Adjustable Plaid Tie (blue/red)	page 85
K9280	Adjustable Waist and Hem Flat Front Double-Knee Pant	page 59



adjustable waist



adjustable waist

ADJUSTABLE WAIST DOUBLE-KNEE PANT

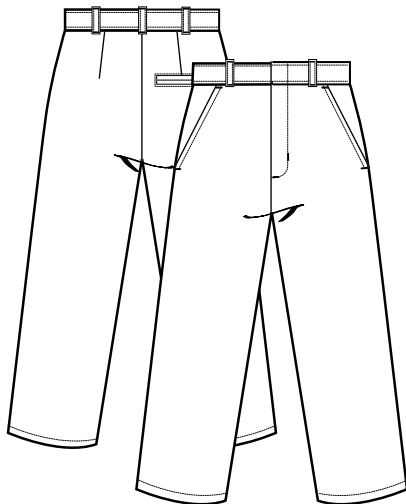
Special heat sealing and side seam stitching process ensures long-lasting durability of this basic pant. A classic hook-and-eye finalizes this academic must-have.

Cotton blend with Wrinkle No More™ fabric. Imported. Machine wash.

K9001



2T-4T	BA							
4-7	CA	S	S	S	S	●	S	S
8-14	HB	S	S	S	S	●	S	S
16-20	HJ	S	S	S	S	●	S	S
10-20H	HK	S	S	S	S	●	S	●
4S-7S	CB	S	S	●	●		●	
8S-14S	HC	S	S	●	●		●	
36H-40H	JK	●	●					

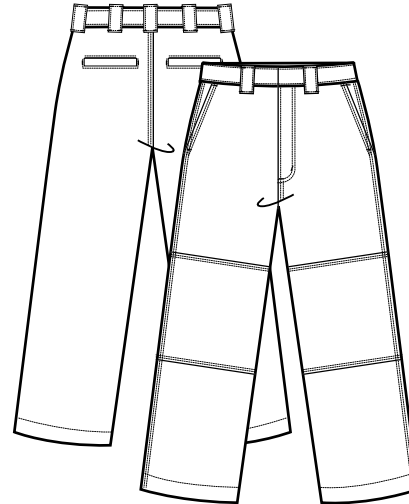


adjustable waist

K9103



2T-4T	BA							
4-7	CA	S	S	●	●	●		
8-14	HB	S	S	●	●	●		
16-20	HJ	S	S	●	●	●		
10-20H	HK	S	S	●				
4S-7S	CB							
8S-14S	HC							



adjustable waist



utility pocket

ADJUSTABLE WAIST AND HEM FLAT FRONT DOUBLE-KNEE PANT

This flat front version of our classic pant has durable double knee and an inside adjustable elastic waist for a perfect fit.

Cotton blend with Wrinkle No More™ fabric. Imported. Machine wash.

K9280



2T-4T	BA							
4-7	CA	S	S	S	●			
8-14	HB	S	S	S	●			
16-20	HJ	S	S	S	●			
10-20H	HK	S	●	●	●			
4S-7S	CB	S	S					
8S-14S	HC	S	S					

UTILITY POCKET PANT

Boys make the right call with these pants. A utility pocket is hidden on the back of the right leg of these basic flat front twill pants.

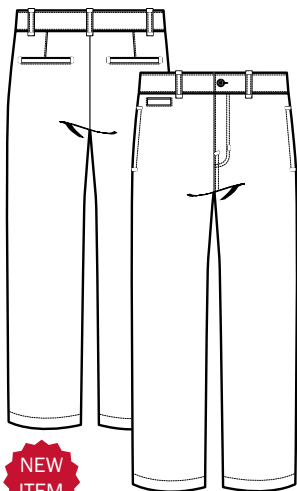
Cotton blend with Wrinkle No More™ fabric. Imported. Machine wash.

K9182



2T-4T	BA							
4-7	CA	S	S	S	●			
8-14	HB	S	S	S	●			
16-20	HJ	S	S	S	●			
10-20H	HK	S	S	●	●			
4S-7S	CB							
8S-14S	HC							

BOYS PANTS



NEW
ITEM



adjustable waist

STRAIGHT
LEG

SOFT
HAND
FINISH

STRAIGHT LEG FLAT FRONT PANT WITH ADJUSTABLE WAIST

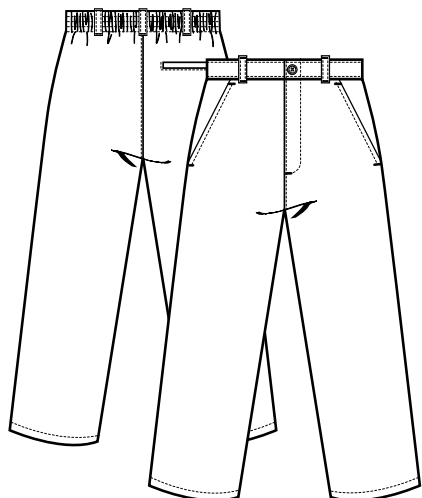
Our classic uniform pant...is more updated with smart menswear detailing. It sports a slimmer leg and shorter rise, adjustable waist with new inner waist band trim and clean finish. A great pant for school and occasions that call for a more polished look.

Cotton blend with Wrinkle No More™. Imported. Machine wash.

K9464

E G

2T-4T	BA		
4-7	CA	●	●
8-14	HB	●	●
16-20	HJ	●	●
10-20H	HK	●	●
4S-7S	CB		
8S-14S	HC		



PULL-ON BOYS PANT

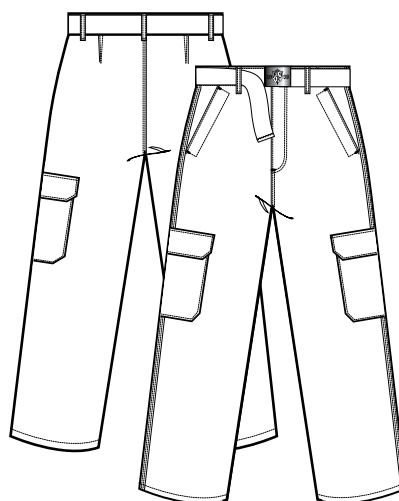
Easy pull-on pants have a mock fly and button, two front pockets, and a single back pocket.

Cotton blend with Wrinkle No More™ fabric. Imported. Machine wash.

K9319

E G F J

2T-4T	BA	S	S	S	S
4-7	CA	●	●		
8-14	HB	●	●		
16-20	HJ	●	●		
10-20H	HK	●	●		
4S-7S	CB				
8S-14S	HC				



belt detail

BELTED CARGO POCKET PANT

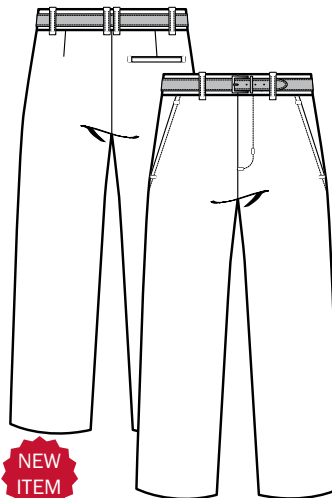
A streamlined version of the cargo pant, this style has hidden button under the pocket flap. Side pockets and canvas belt with antique finish FT buckle. Button and zipper closure.

Cotton blend with Wrinkle No More™. Imported. Machine wash.

K9204

E G F

2T-4T	BA			
4-7	CA	●	●	●
8-14	HB	●	●	●
16-20	HJ	●	●	●
10-20H	HK	●	●	●
4S-7S	CB			
8S-14S	HC			



NEW
ITEM

FLAT FRONT BELTED DRESS PANT

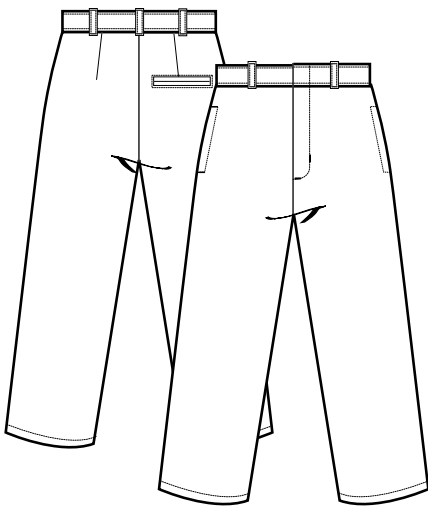
Boys will love the comfort and wearability of our new dress pant especially since it has an adjustable tailored waistband for all sizes. Simple flat front with slant pocket styling and a slimmer leg silhouette make this a classic.

Polyester. Imported. Machine wash.

K9461

E F

2T-4T	BA		
4-7	CA	●	●
8-14	HB	●	●
16-20	HJ	●	●
10-20H	HK	●	●
4S-7S	CB		
8S-14S	HC		



adjustable waist

FLAT FRONT ALL SEASON PANT

This flat front classic has clean lines in a slightly heavier fabric. Closed with hook-and-eye closure and zip front, it also has elastic back waist.

Polyester/nylon. Imported. Machine wash.

K9272

2T-4T	BA		
4-7	CA	S	S
8-14	HB	S	S
16-20	HJ	S	S
10-20H	HK	●	●
4S-7S	CB		
8S-14S	HC		



P9116 Barn Jacket
 C9016 V-Neck Sweater Vest
 E9002 Long Sleeve Oxford Shirt
 F9012 Adjustable Plaid Tie
 K9464 Straight Leg Flat Front Pant with Adjustable Waist

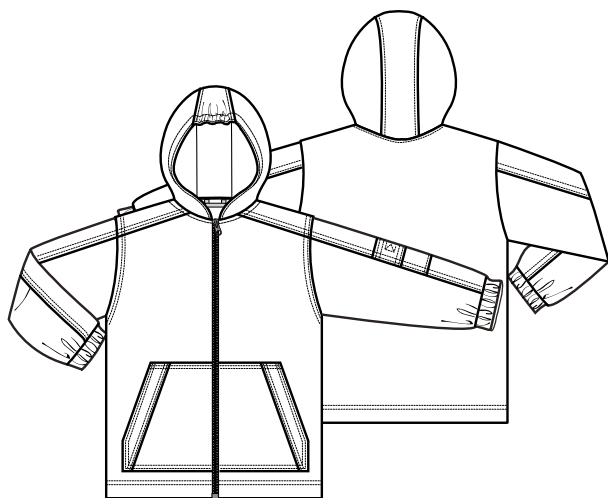
page 63
 page 55
 page 53
 page 85
 page 60

BOYS JACKETS



P9115 Packable Puffer Jacket page 63
A9085 Long Sleeve Pique Polo with Knit Collar page 49
K9280 Adjustable Waist and Hem Flat Front Double-Knee Pant page 59

BOYS JACKETS



TRANSITIONAL JACKET

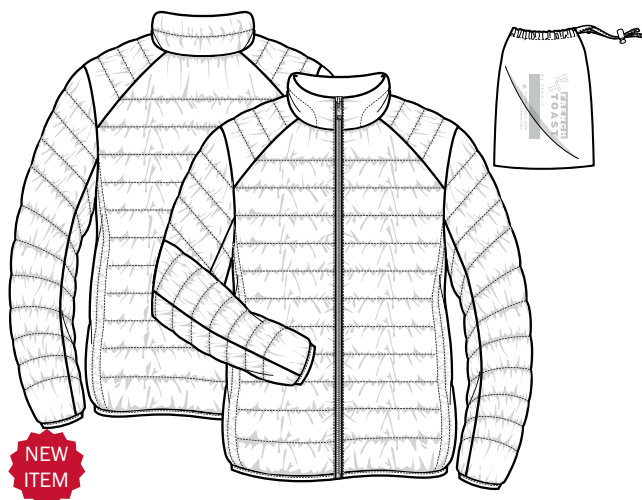
This jacket is designed for in-between seasons. Made with ripstop nylon fabric and lined with grey fleece material on its hood, it can stand any weather condition. Kangaroo pockets with flaps and elastic cuffs with Velcro® closure, this jacket is more than functional.

Polyester ripstop shell & fleece lining. Imported. Machine wash.

P9064

E

2T-4T	BA	
4-7	CA	S
8-14	HB	S
16-20	HJ	S
10-20H	HK	



NEW ITEM

PACKABLE PUFFER JACKET

It's hard to believe that a jacket this puffy and warm can fold down into a teeny little bag - But it does! Silky poly with full zipper and detachable carry bag.

Polyester. Imported. Machine wash.

P9115

E

2T-4T	BA	
4-7	CA	●
8-14	HB	●
16-20	HJ	●
10-20H	HK	



NEW ITEM

BARN JACKET

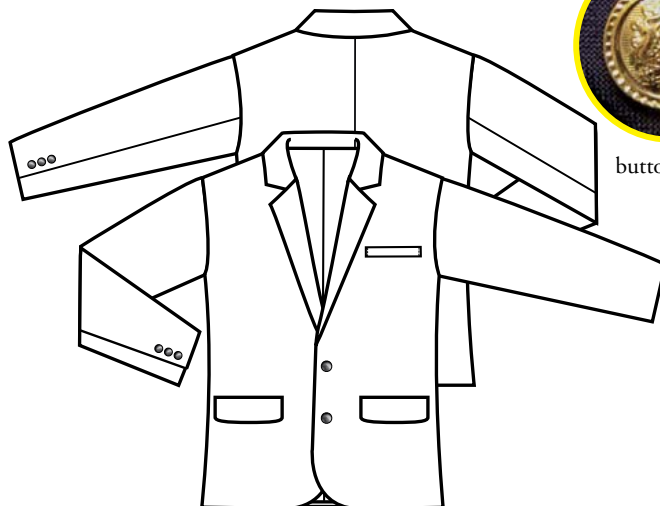
When the temperature cools, they will reach for our new barn jacket. With rich details only seen in men's outerwear, it has full buttoned pockets, side hand warmers, and full zipper covered with a snap placket. Navy blue with contrasting beige corduroy trim. Light peach canvas with quilted lining.

Cotton. Imported. Machine wash.

P9116

E

2T-4T	BA	
4-7	CA	●
8-14	HB	●
16-20	HJ	●
10-20H	HK	



button detail

BOYS SCHOOL BLAZER

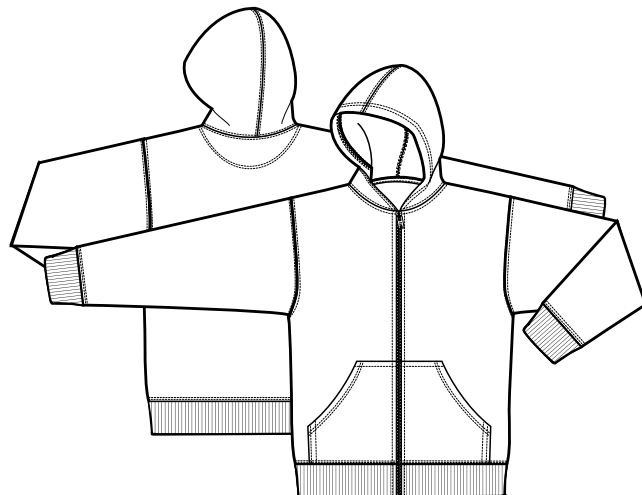
Whether or not he goes to prep school, this jacket is perfect to mix with uniforms and shirts, but dressy enough to be worn for other occasions. A true classic with it's iconic gold buttons, that should be part of any boy's wardrobe.

Polyester. Imported. Machine wash.

P9103

E

2T-4T	BA	
4-7	CA	●
8-14	HB	●
16-20	HJ	●
10-20H	HK	●



HOODED SWEATSHIRT

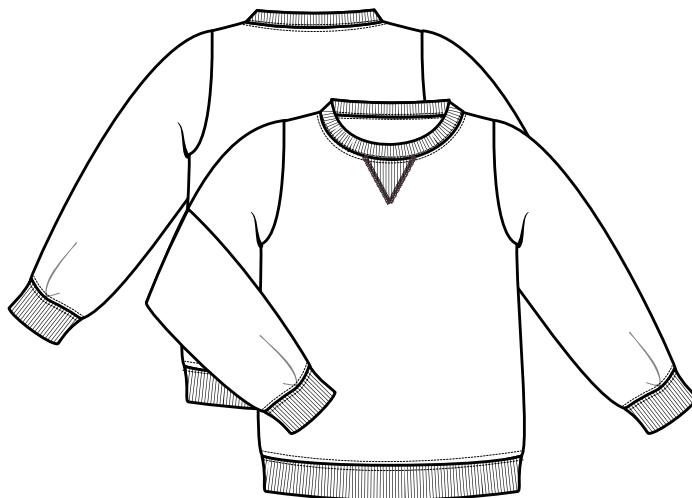
Certainly a must for gym, but also for layering, the classic “hoodie” is now part of the standard school uniform. Ours is soft and super comfortable with a bit of lycra for good fit. Wide bands cinch in the cuffs and bottom. Full kangaroo pocket detailing.

Cotton blend. Imported. Machine wash..

P9104

E F J

2T-4T	BA	S	●	●
XS(4/5)-S(6/7)	CC	S	●	●
M(8)-XL(14/16)	HY	S	●	●
XXL(18/20)	XXL	S		



CREW NECK SWEATSHIRT

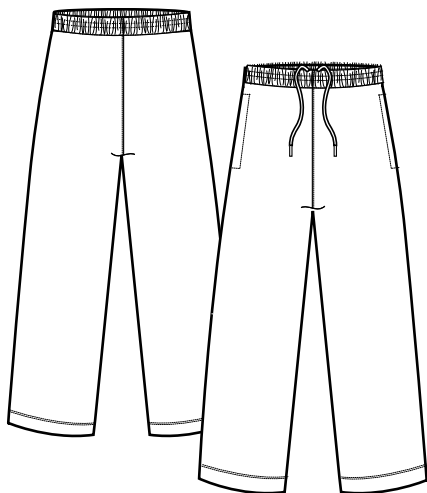
Soft and so comfortable, this cotton/poly blend sweatshirt is slightly oversized for layering options. Banded cuffs, collar and bottom hem.

Cotton blend. Imported. Machine wash.

A9433

E

2T-4T	BA	
XS(4/5)-S(6/7)	CC	●
M(8)-XL(14/16)	HY	●



BASIC FLEECE PANT

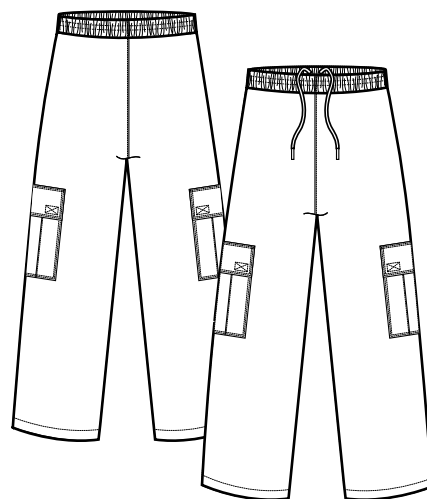
It's simple styling and comfort make this one our best classics. Fully elasticized drawstring waist, on seam side pockets.

Cotton blend. Imported. Machine wash.

K9406

E F J

2T-4T	BA	S	●	●
XS(4/5)-S(6/7)	CC	S	●	●
M(8)-XL(14/16)	HY	S	●	●
XXL(18/20)	XXL	S		



BASIC CARGO FLEECE PANT

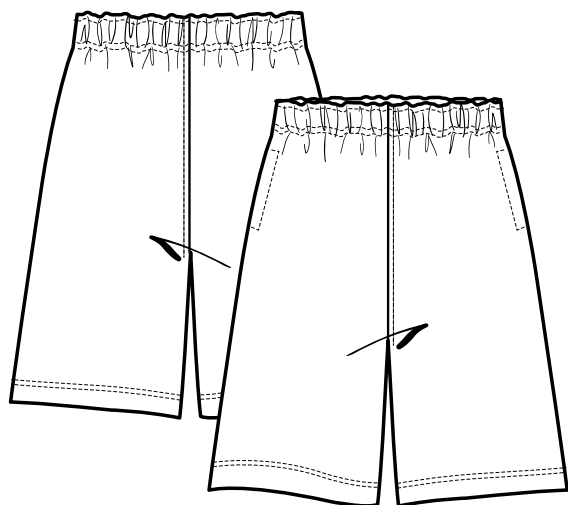
For gym, casual days or simply for hanging out, he will love the comfort and fit of our full length fleece pant. Fully elasticized drawstring waist and two flap cargo pockets to hold essentials.

Cotton blend. Imported. Machine wash.

K9407

E

2T-4T	BA	●
XS(4/5)-S(6/7)	CC	●
M(8)-XL(14/16)	HY	●
XXL(18/20)	XXL	



BASIC ACTIVE GYM SHORT

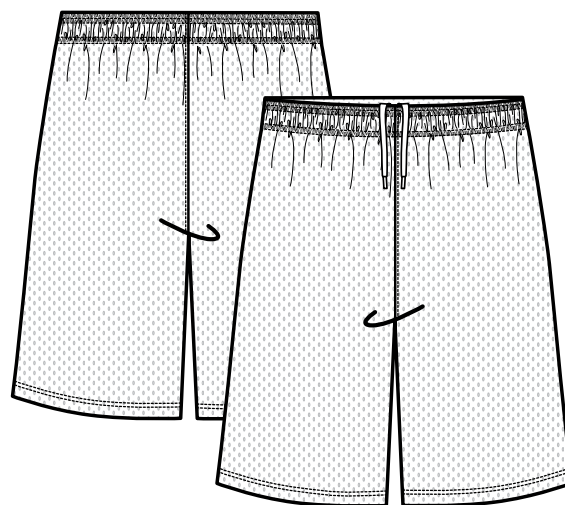
A basic jersey short is always needed and this short certainly fits the bill. An elastic waist and two front pockets makes this short a necessity.

Cotton blend with Wrinkle No More™ fabric. Imported. Machine wash.

H9131

E

2T-4T	BA	
4-7	CA	●
8-14	HB	●
16-20	HJ	●
10-20H	HK	



MESH GYM SHORT

A natural addition to our gym collection, the mesh short is light, cool and airy thanks to its poly mesh construction. Mid length, with drawstring adjustable waist.

Polyester. Imported. Machine wash.

H9222

E

2T-4T	BA	
4-7	CA	●
8-14	HB	●
16-20	HJ	●
10-20H	HK	

TODDLER GIRLS



A9432 Puff Sleeve-Double Button Polo
X9103 Two Tab Scooter

page 67
page 70



INTERLOCK KNIT POLO WITH PICOT COLLAR

Classically styled with a sleek, three-flower button placket, our comfortable polo gets a feminine twist with picot trim at the collar and ribbed cuffs.

Cotton blend. Imported. Machine wash.

A9423



2T-4T MA S S S S S ● ● ●



PUFF SLEEVE – DOUBLE BUTTON POLO

Cute little double-buttoned puffed sleeves dress up our basic girls' polo. Shaped for feminine fit.

Cotton blend. Imported. Machine wash.

A9432



2T-4T MA ●



rhinestone
button



LONG SLEEVE INTERLOCK KNIT POLO WITH PICOT COLLAR

Classically styled with a sleek, three-flower button placket, our comfortable polo gets a feminine twist with picot trim at the collar and ribbed cuffs.

Cotton blend. Imported. Machine wash.

A9424



2T-4T MA S ● ● ● ● ●



CARDIGAN BLOUSE 2 FOR

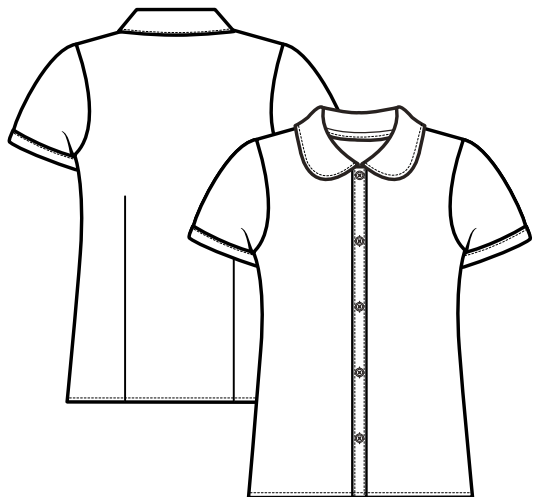
What's better than a shirt and a cardigan? A combo that's both! Our short sleeve cardigan boasts mock shirt sleeves and collar.

Cotton blend. Imported. Machine wash.

A9409



2T-4T MA ●



SHORT SLEEVE PETER PAN BLOUSE

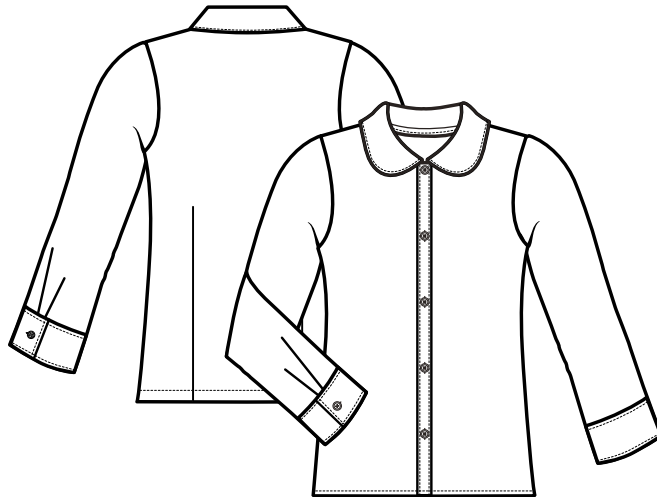
A true classic, our easy-care™ blouse is topped by a rounded peter pan collar.

Cotton blend with Wrinkle No More™ fabric. Imported. Machine wash.

E9320



2T-4T MA S S S ●



LONG SLEEVE PETER PAN BLOUSE

A true classic, our easy-care™ blouse is topped by a rounded peter pan collar.

Cotton blend with Wrinkle No More™ fabric. Imported. Machine wash.

E9321



2T-4T MA S S S ●



left to right:

E9279 Short Sleeve Ribbon Bow Blouse

Y9098 Pleated Hem Jumper

E9003 Oxford Shirt

F9012 Adjustable Plaid Tie

K9182 Utility Pocket Pant

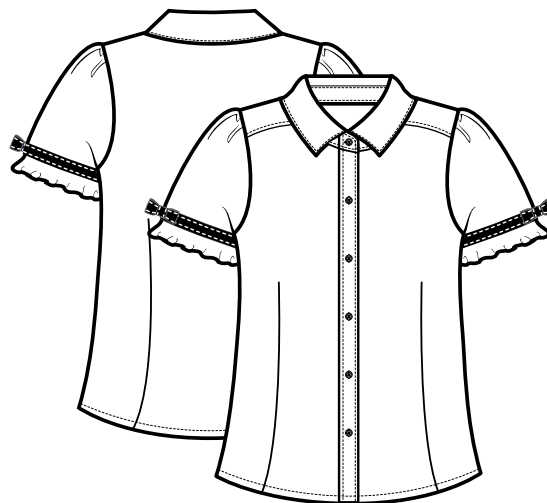
page 71

page 71

page 75

page 85

page 77



SHORT SLEEVE RIBBON BOW BLOUSE

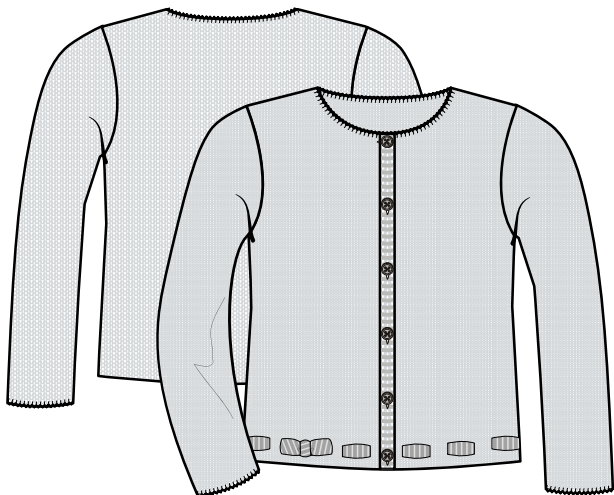
Sweet little ribbons trim and accentuate the ruffled edges of our short sleeve classic. Perfectly simple...simply perfect.

Cotton blend with Wrinkle No More™ fabric. Imported. Machine wash.

E9279



2T-4T MA ● ● ●



WEAVE RIBBON CARDIGAN

This darling little cardigan has a ultra-cute grosgrain ribbon weave detail that will make any little girl feel they've earned an "A" in style!

Acrylic. Imported. Machine wash.

C9108

E

2T-4T MA ●



KNIT CARDIGAN SWEATER

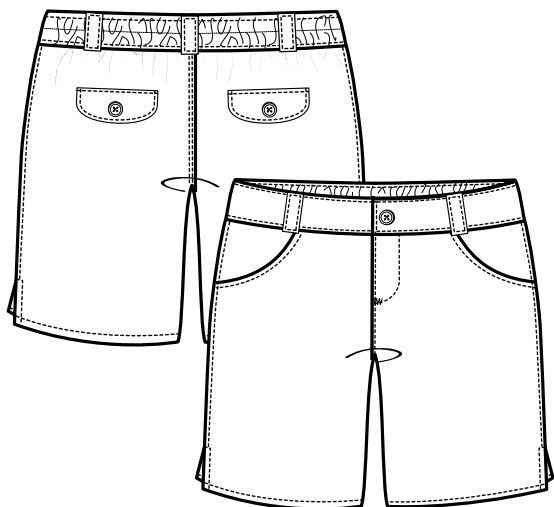
A true traditional crew neck cardigan with dyed-to-match button closure and front pockets. Special anti-pilling qualities keep it looking great throughout the entire school year.

Acrylic. Imported. Machine wash.

C9004

E

2T-4T MA ●



PULL-ON GIRLS SHORT

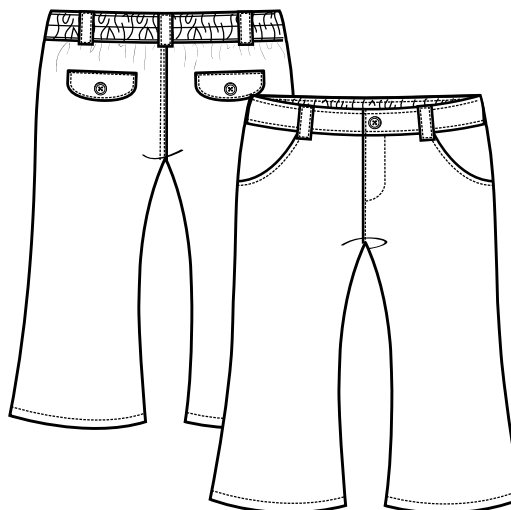
Girls are cute as can be in these adorable shorts! A mock fly, two playful button-flap mock pockets in back and two front scoop pockets complete the girlish styling.

Cotton blend with Wrinkle No More™ fabric. Imported. Machine wash.

H9112

E G

2T-4T MA S S



PULL-ON GIRLS PANT

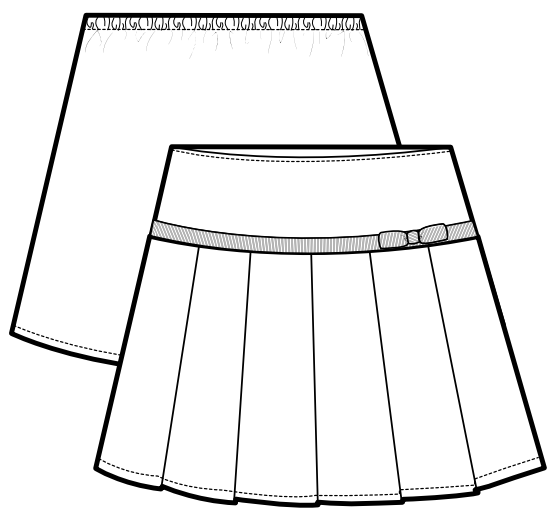
For the little girl on the go, these stretch twill pull-on pants have scoop pockets in front and mock pockets with button detail in back.

Cotton blend with Wrinkle No More™ fabric. Imported. Machine wash.

K9317

E G F J

2T-4T MA S S S ●



PLEATED SCOOTER WITH GROSGRAIN RIBBON
This adorable little twill scooter has a precious grosgrain ribbon trim and bow detail.
Cotton blend with Wrinkle No More™ fabric. Imported. Machine wash.

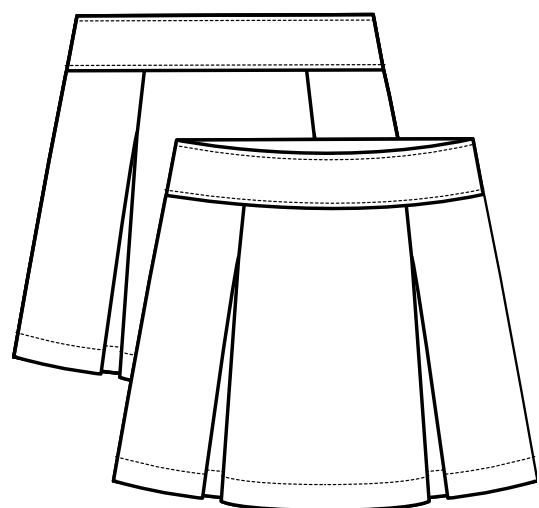
X9129

E

G

F

2T-4T MA ● ● ●



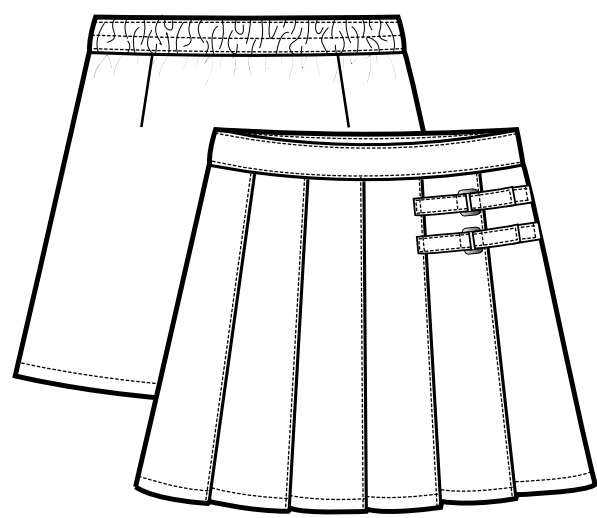
KICK PLEAT SCOOTER
A fashion innovation for girls who want to stay active without sacrificing style. Comfortable jersey sport shorts are hidden under its double kick pleats.
Polyester. Imported. Machine wash.

X9062

E

G

2T-4T MA S ●



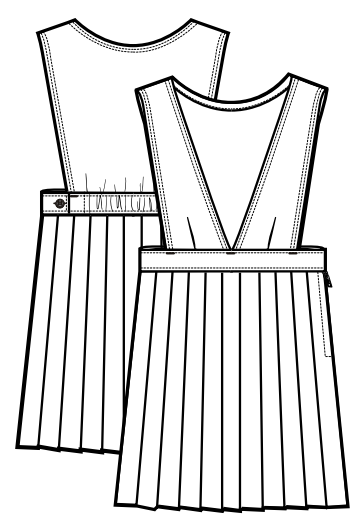
TWO-TAB SCOOTER
This pleated scooter with hidden sport shorts has two buckle tabs at the top for subtle detail.
Polyester. Imported. Machine wash.

X9103

E

G

2T-4T MA S S



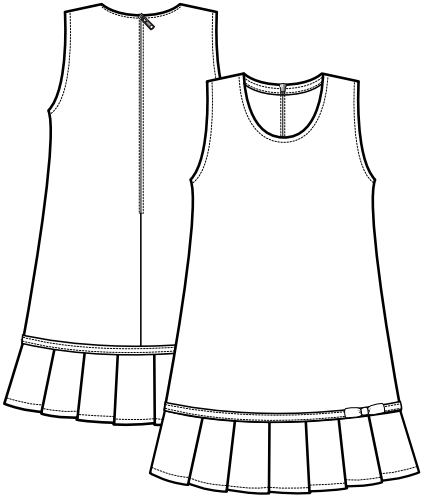
V-NECK PLEATED JUMPER
Classic style reinvented...our v-neck pleated jumper has a full circle of permanent pleats that will look fresh all day long. Hidden side zipper with button closure.
Polyester. Imported. Machine wash.

Y9000

E

G

2T-4T MA S S



PLEATED HEM JUMPER

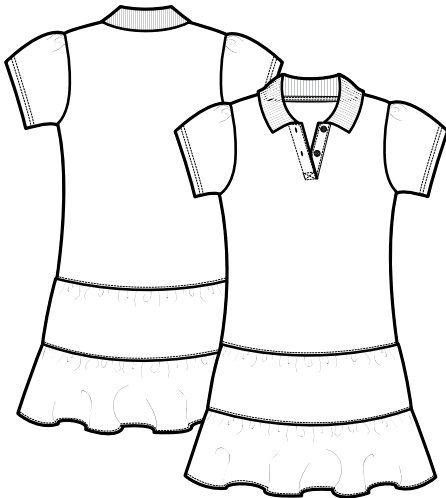
An easy-to-wear style with pleated hem and cute grosgrain ribbon. To finish, it is closed with concealed back zipper.

Cotton blend with Wrinkle No More™ fabric. Imported. Machine wash.

Y9098

E G

2T-4T MA S S



RUFFLED PIQUE DRESS

A winning item for any sporty little girl, this pique dress has a classic polo top and a flirty ruffle skirt bottom.

Cotton blend. Imported. Machine wash.

Z9018

E B N

2T-4T MA ● ● ●



Z9018 Ruffled Pique Dress

TODDLER GIRLS GYM



P9105 Girls Core Fleece Hoodie
K9408 Girls Core Fleece Pant

page 73
page 73



GIRLS CORE FLEECE HOODIE

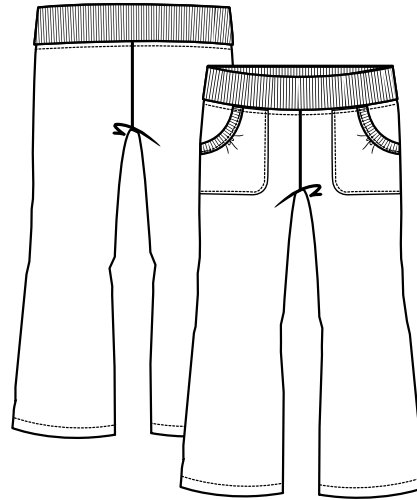
Soft and cozy for those chilly days, our hoodie is cute and sporty with its attached hood and ruching on the front. Knit detailing on the cuffs, pockets and bottom. Full zip.

Cotton blend. Imported. Machine wash.

P9105

E J

2T-4T MA ● ●



GIRLS CORE FLEECE PANT

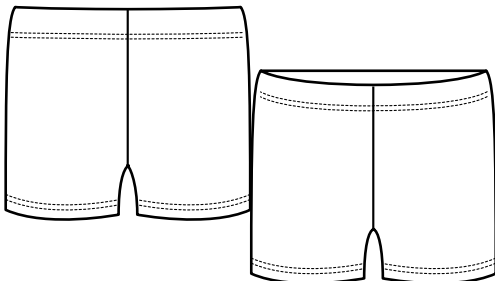
So comfortable she will want to wear it every day, and styled just right so she can, our fleece pant is perfect for class or for gym. Adjustable drawstring waist, easy squared off pockets and full flared leg, make this her go to pant.

Cotton blend with Wrinkle No More™ fabric. Imported. Machine wash.

K9408

E J

2T-4T MA ● ●



BIKE SHORT

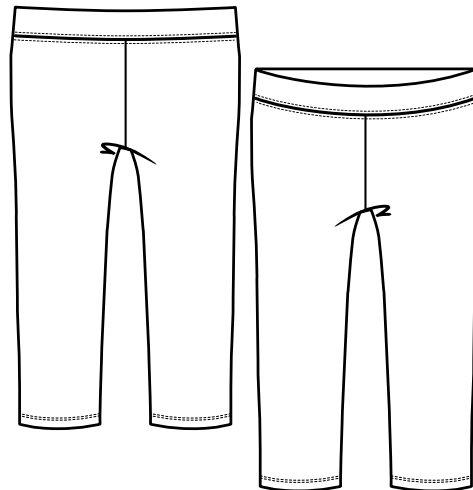
Great for the active girl on the go. Just pull on our bike short underneath a skirt or jumper and you are off and running!

Cotton/spandex blend. Imported. Machine wash.

H9006

E

2T-4T MA ●



ANKLE LENGTH LEGGING

Our new basic is borrowed from the fashion world and sure to be a staple for school. This simple, classic legging works as a layering piece with dresses, skorts, skirts and scooters.

Cotton/spandex blend. Imported. Machine wash.

K9448

E G

2T-4T MA ● ●

TODDLER BOYS



C9000 V-Neck Anti-Pill Cardigan
E9003 Oxford Shirt
F9012 Adjustable Plaid Tie
K9319 Pull-On Boys Pant

page 76
page 75
page 85
page 76



PIQUE POLO WITH KNIT COLLAR

This textured, heavyweight polo shirt makes a boy feel confident to get ready for school everyday. As he buttons up the three-button center placket, he knows it will be a great day.

Cotton blend. Imported. Machine wash.

A9084



2T-4T BA S S S S S ● ● ● ● ●



CLASSIC DRESS SHIRT

A true classic for both its great style and value, our poplin dress shirt features an expandable collar, front pocket, and is made from easy care Wrinkle No More™ fabric.

Cotton blend with Wrinkle No More™ fabric. Imported. Machine wash.

E9005



2T-4T BA S S S



LONG SLEEVE PIQUE POLO WITH KNIT COLLAR

This textured, heavyweight polo shirt makes a boy feel confident to get ready for school everyday. As he buttons up the three-button center placket, he knows it will be a great day.

Cotton blend. Imported. Machine wash.

A9085



2T-4T BA ● ● ● ● ● ● ● ●



OXFORD SHIRT

Our crisp oxford shirts are made from our easy care Wrinkle No More™ fabric. An expandable collar offers extra comfort and the front pocket finishes off the classic look.

Cotton blend with Wrinkle No More™ fabric. Imported. Machine wash.

E9003



2T-4T BA ●



LONG SLEEVE CLASSIC DRESS SHIRT

A true classic for both its great style and value, our poplin dress shirt features an expandable collar, front pocket, and is made from easy care *Wrinkle No More®* fabric.

Cotton blend with Wrinkle No More™ fabric. Imported. Machine wash.

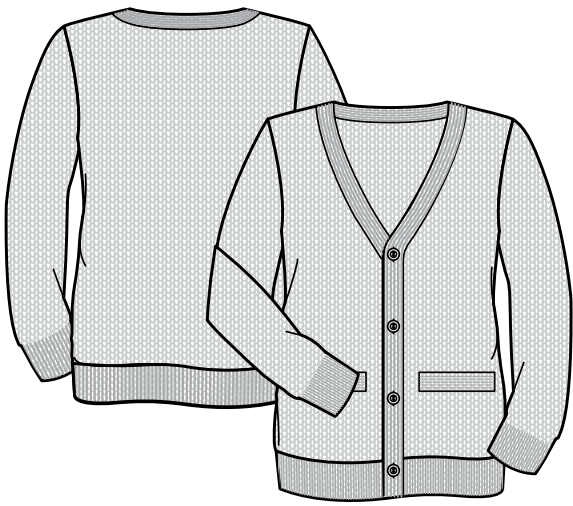
E9004

A

B

C

2T-4TBASSS



V-NECK ANTI-PILL CARDIGAN

An old classic with a modern take, this anti-pill cardigan sports the traditional v-neck, front pockets and button down front, make this sweater a fantastic value.

Acrylic. Imported. Machine wash.

C9000

E

2T-4TBA●



LONG SLEEVE OXFORD SHIRT

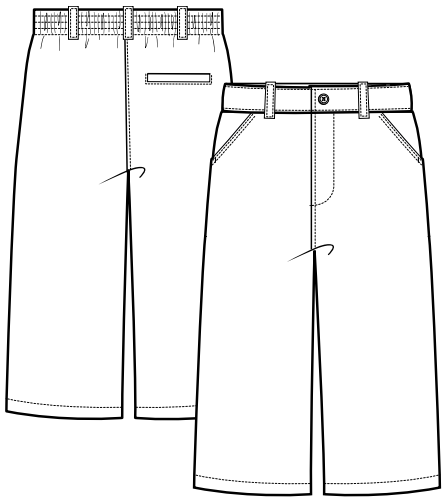
Our crisp oxford shirts are made from our easy care *Wrinkle No More™* fabric. An expandable collar offers extra comfort and the front pocket finishes off the classic look.

Cotton blend with Wrinkle No More™ fabric. Imported. Machine wash.

E9002

A

2T-4TBA●



PULL-ON BOYS PANT

Little boys will love the ‘big boy’ look of these pants. Easy pull-on pants have a mock fly and button, two front pockets, and a single back pocket.

Cotton blend with Wrinkle No More™ fabric. Imported. Machine wash.

K9319

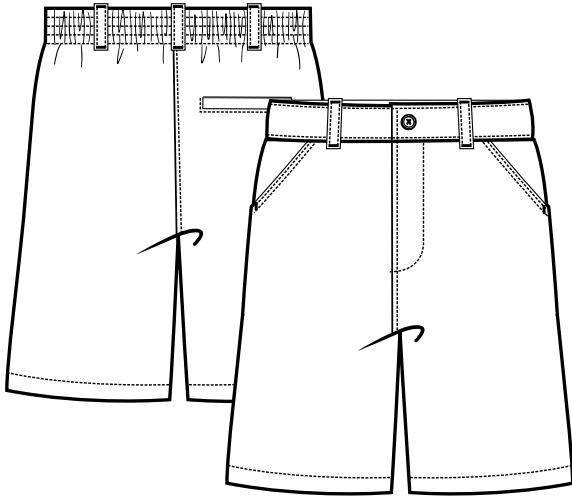
E

G

F

J

2T-4TBASSS



PULL-ON BOYS SHORT

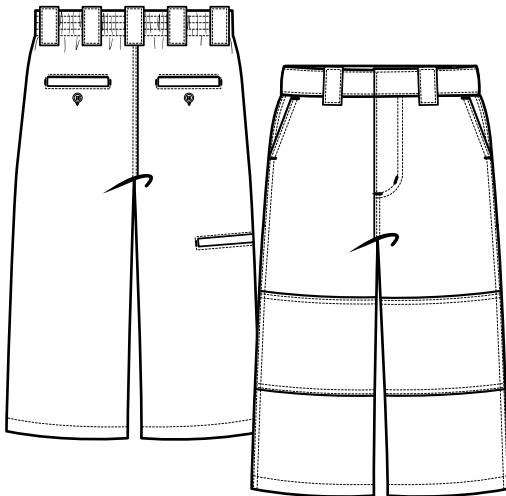
Little boys will love the comfy pull on shorts with mock fly and button, insert pockets in front, and a single back pocket.

Cotton blend with Wrinkle No More™ fabric. Imported. Machine wash.

H9113

E G F

2T-4T BA S S ●



utility pocket

UTILITY POCKET PANT

Boys make the right call with these pants. A utility pocket is hidden on the back of the right leg of these basic flat front twill pants.

Cotton blend with Wrinkle No More™ fabric. Imported. Machine wash.

K9182

E G

2T-4T BA ● ●



left to right:

A9084 Pique Polo with Knit Collar

H9113 Pull-On Short

A9423 Interlock Knit polo with Picot Collar

X9103 Two-Tab Scooter

page 75

page 77

page 67

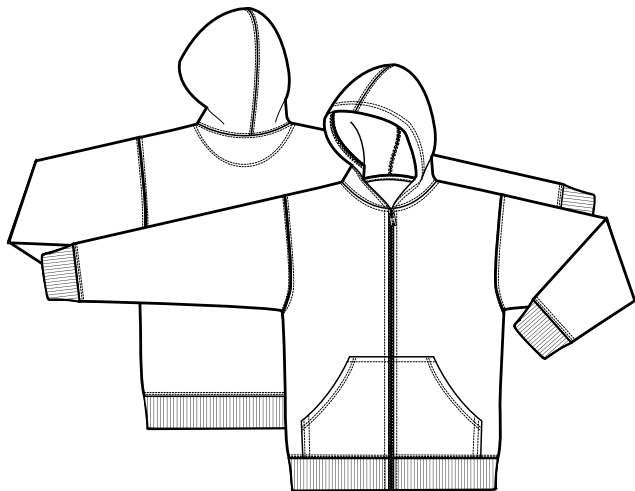
page 70

TODDLER BOYS GYM



P9104 Hooded Sweatshirt
A9084 Pique Polo with Knit Collar
H9113 Pull-On Short

page 79
page 75
page 77



HOODED SWEATSHIRT

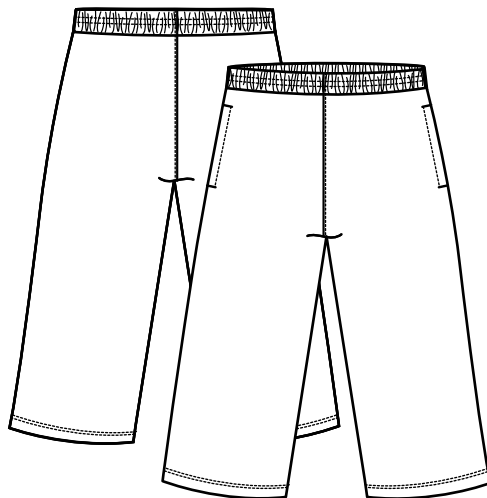
Certainly a must for gym, but also for layering, the classic “hoodie” is now part of the standard school uniform. Ours is soft and super comfortable with a bit of lycra for good fit. Wide bands cinch in the cuffs and bottom. Full kangaroo pocket detailing.

Cotton blend. Imported. Machine wash..

P9104

E F J

2T-4T BA S ● ●



BASIC FLEECE PANT

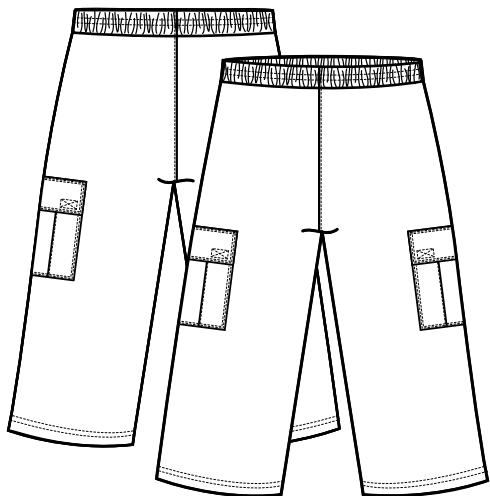
It's simple styling and comfort make this one our best classics. Fully elasticized drawstring waist, on seam side pockets.

Cotton blend with Wrinkle No More™ fabric. Imported. Machine wash.

K9406

E F J

2T-4T BA S ● ●



BASIC CARGO FLEECE PANT

For gym, casual days or simply for hanging out, he will love the comfort and fit of our full length fleece pant. Fully elasticized drawstring waist and two flap cargo pockets to hold essentials.

Cotton blend with Wrinkle No More™ fabric. Imported. Machine wash.

K9407

E

2T-4T BA ●



P9104 Hooded Sweatshirt
A9084 Pique Polo with Knit Collar
K9406 Basic Fleece Pant

page 79
page 75
page 79

@CLASS GIRLS



A9410D @class Short Sleeve Polo
K9353A @class Adjustable Waist Flat Front Boot Cut Pant

page 80
page 81



@CLASS SHORT SLEEVE POLO

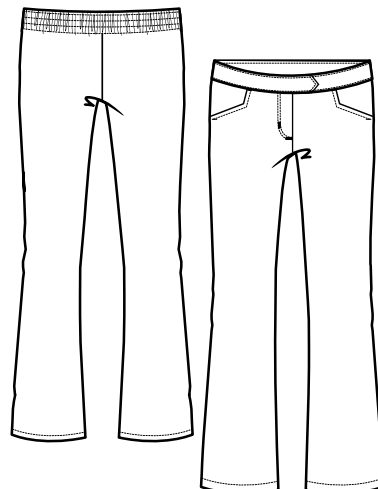
A feminine take on the classic; our girls short sleeve polo is gently puffed at the shoulders and has thinner banding at the placket and sleeve. Sweetly shaped for a feminine silhouette.

Cotton blend. Imported. Machine wash.

A9410D



XS(4/5)-(6/6X) UU	●	●	●	●	●	●	●
M(7/8) L(10/12) XL(14/16) XY	●	●	●	●	●	●	●



@CLASS EVERYDAY SCHOOL PANT

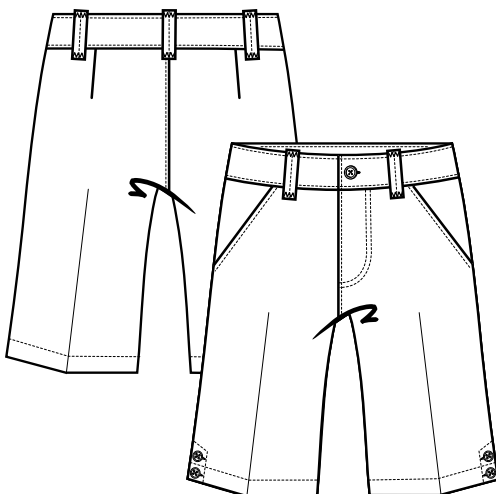
Clean lines and simple construction make these the ideal pants for girls. Made of easy-care polyester, this pant features two front insert pockets and flattering front fly.

Polyester. Imported. Machine wash.

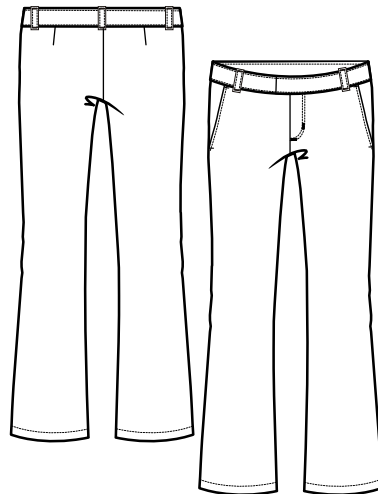
K9035D



2T-4T	MA	●	●
4-6X	UA	●	●
7-14	XA	●	●
16-20	XD	●	●
10.5-20.5	XH	●	●
4S-6XS	UV	●	●
7S-14S	GA	●	●



adjustable waist



adjustable waist

@CLASS ADJUSTABLE WAIST BERMUDA WITH BUTTONS

Our new bermuda has classic jean detailing with slash pockets, double stitched fly and fully adjustable waist. Smart button detailing at leg opening.

Cotton blend. Imported. Machine wash.

H9223D



2T-4T	MA	●	●
4-6X	UA	●	●
7-14	XA	●	●
16-20	XD	●	●
10.5-20.5	XH	●	●
4S-6XS	UV	●	●
7S-14S	GA	●	●

@CLASS ADJUSTABLE WAIST FLAT FRONT BOOT CUT PANT

She will rock the fashion scene when she wears our new boot cut flat front pant..... But with one little secret... it has a fully adjustable, hidden elastic waist for comfort too!

Cotton blend. Imported. Machine wash.

K9449D



2T-4T	MA	●	●
4-6X	UA	●	●
7-14	XA	●	●
16-20	XD	●	●
10.5-20.5	XH	●	●
4S-6XS	UV	●	●
7S-14S	GA	●	●



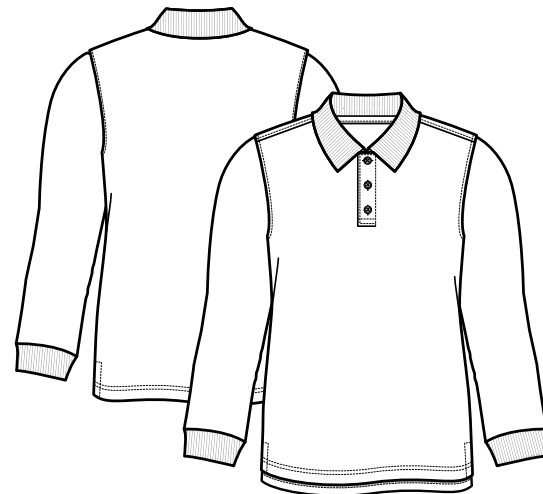
@CLASS BOYS PIQUE POLO

A great polo at a great price! A flat knit collar and dyed- to- match buttons makes this a great everyday school top.

Cotton blend. Imported. Machine wash.

A9039D

	A	B	C	E	N	K	H
XS(4/5)-S(6/7) CC	S	S	S	●	●	●	●
M(8)-XL(14/16) HY	S	S	S	●	●	●	●
XXL(18/20) XXL	S	S	S	●	●	●	●
10-20H HK	●	●	●	●	●	●	●



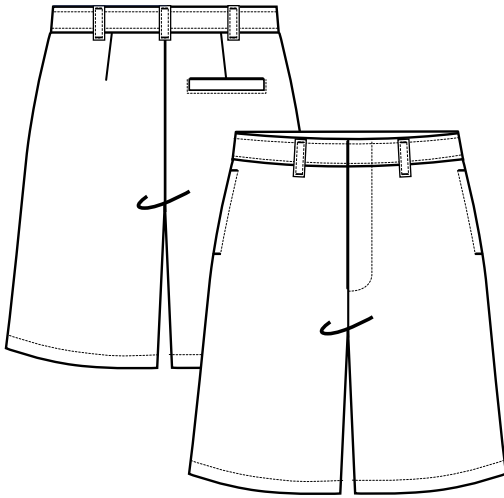
@CLASS BOYS LONG SLEEVE PIQUE POLO

A great polo at a great price! A flat knit collar and dyed- to- match buttons makes this a great everyday school top.

Cotton blend. Imported. Machine wash.

A9024D

	A	B	C	E	N	K	H
XS(4/5)-S(6/7) CC	●	●	●	●	●	●	●
M(8)-XL(14/16) HY	●	●	●	●	●	●	●
XXL(18/20) XXL	●	●	●	●	●	●	●



adjustable waist

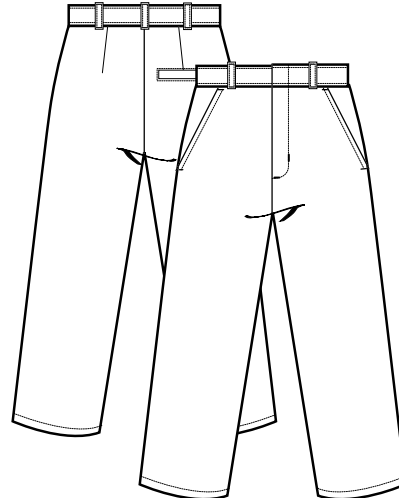
@CLASS ADJUSTABLE WAIST FLAT FRONT SHORT

Our straight forward flat front short has a secret. It's the hidden adjustable waist ensuring good fit with great style.

Cotton blend. Imported. Machine wash.

H9221D E G

2T-4T	BA		
4-7	CA	●	●
8-14	HB	●	●
16-20	HJ	●	●
10-20H	HK		
31-38	CB		
4S-14S	HC		



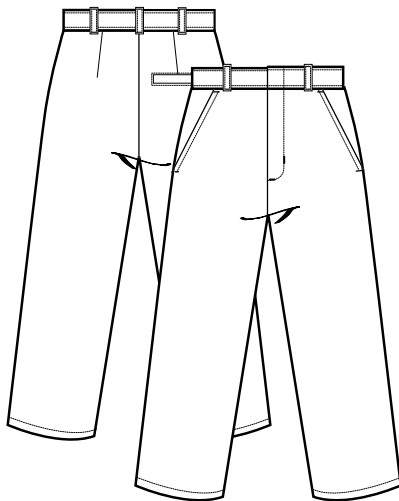
@SCHOOL EVERYDAY PANT

A great versatile twill pant, this value-priced pair features a neat besom back pocket, two front insert pockets, and is finished with a sturdy hook-and-eye front closure.

Cotton blend. Imported. Machine wash.

K9044A E

2T-4T	BA	
4-7	CA	S
8-14	HB	S
16-20	HJ	S
10-20H	HK	S
31-38	CB	
4S-14S	HC	



adjustable waist

@CLASS ADJUSTABLE WAIST DOUBLE KNEE FLAT FRONT PANT

The boy's uniform Trifecta! Our pant boasts fully fused double knees, a hidden adjustable waist and stylish flat front silhouette. Oh, and it's machine washable/easy care too!

Cotton blend. Imported. Machine wash.

K9346D E G

2T-4T	BA		
4-7	CA	S	S
8-14	HB	S	S
16-20	HJ	S	S
10-20H	HK	●	●
31-38	CB		
4S-14S	HC		



A9039D @class Short Sleeve Pique Polo
K9044A @class Everyday Pant

page 84
page 85

TIES & CROSS TIES

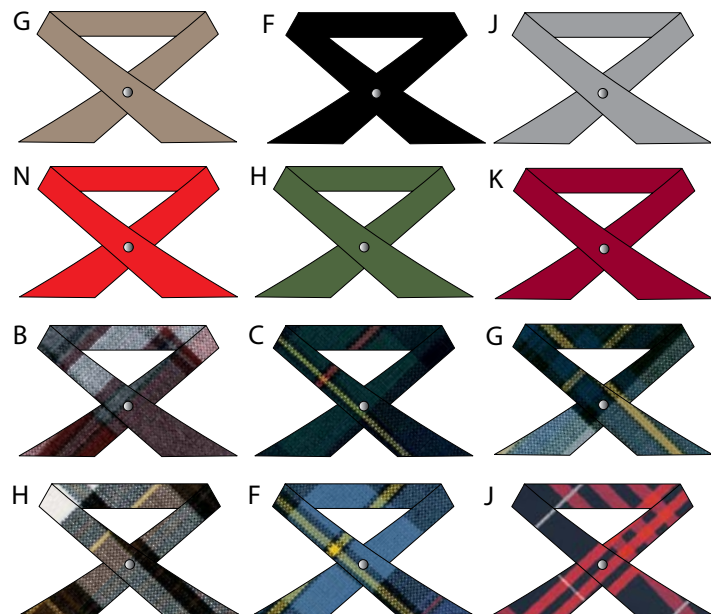


left to right:

E9002 Long Sleeve Oxford Shirt
F9012 Adjustable Plaid Tie (blue/gold)
K9280 Adjustable Waist and Hem Flat Front Double-Knee Pant
C9000 V-Neck Anti-Pill Cardigan
E9002 Long Sleeve Oxford Shirt
F9012 Adjustable Plaid Tie (blue/red)
K9280 Adjustable Waist and Hem Flat Front Double-Knee Pant

page 53
page 85
page 59
page 54
page 53
page 85
page 59

TIES & CROSS TIES



ADJUSTABLE TIES

Ties are perfect accessories to amplify our uniforms. We offer a wide variety of colors that will not go out of style. Also with adjustable band that goes under the collar. Boys (4–20 sizes) one size only, sold in three dozen prepack.

*Polyester/rayon blend(plaids), polyester fabric (solids). Imported.
Machine wash.*

F9011/F9012

	Size	
TA	4-7	One size fits all
TC	8-12	One size fits all
TE	14-20	One size fits all

F9011 (SOLIDS)

(N) Red (H) Hunter
(K) Burgundy (F) Black
(E) Navy (G) Khaki
(J) Grey

F9012 (PLAIDS)

(B) Burgundy (C) Green
(J) Navy/Red (G) Blue/Gold
(H) Brown (F) Blue/Red

ADJUSTABLE CROSS TIES

To top off our uniforms, we offer these simple ties with adjustable buckles and dome pearl embellishment in the front. One size only, sold in three dozen prepack.

*Polyester/rayon blend(plaids), polyester fabric (solids). Imported.
Machine wash.*

F9002/F9003

	Size	
VA	4-20	One size fits all

F9002 (SOLIDS)

(N) Red (H) Hunter
(K) Burgundy (F) Black
(G) Khaki (E) Navy
(J) Grey

F9003 (PLAIDS)

(B) Burgundy (C) Green
(J) Navy/Red (G) Blue/Gold
(H) Brown (F) Blue/Red

SIZE CHARTS

boys

<i>Age</i>	<i>Size</i>	<i>Weight(lbs)</i>	<i>Height(in)</i>	<i>Chest</i>	<i>Waist</i>
<i>Pre-sch</i>	<i>2t</i>	<i>25-28</i>	<i>33-34</i>	<i>21</i>	<i>20.5</i>
	<i>3t</i>	<i>29-32</i>	<i>35-36</i>	<i>22</i>	<i>21</i>
	<i>4t</i>	<i>33-36</i>	<i>37-38</i>	<i>23</i>	<i>21.5</i>
<i>3-4</i>	<i>4</i>	<i>33-37</i>	<i>38-40</i>	<i>23</i>	<i>21.5</i>
<i>4-5</i>	<i>5</i>	<i>38-42</i>	<i>41-43</i>	<i>24</i>	<i>22</i>
<i>5-6</i>	<i>6</i>	<i>43-48</i>	<i>44-46</i>	<i>25</i>	<i>22.5</i>
<i>6-7</i>	<i>7</i>	<i>49-57</i>	<i>47-48</i>	<i>26</i>	<i>23</i>
<i>7-8</i>	<i>8</i>	<i>58-67</i>	<i>49-50</i>	<i>26.5</i>	<i>23.5</i>
<i>9-10</i>	<i>10</i>	<i>68-77</i>	<i>51-54</i>	<i>28</i>	<i>24.5</i>
<i>11-12</i>	<i>12</i>	<i>78-87</i>	<i>55-58</i>	<i>29.5</i>	<i>25.5</i>
<i>12-13</i>	<i>14</i>	<i>88-97</i>	<i>59-61</i>	<i>31.5</i>	<i>26.5</i>
<i>14 & up</i>	<i>16</i>		<i>62-64</i>	<i>33</i>	<i>27.5</i>
	<i>18</i>	<i>98 & up</i>	<i>65-66</i>	<i>34.5</i>	<i>28.5</i>
	<i>20</i>		<i>67-68</i>	<i>36</i>	<i>30</i>

boys alpha

XS	4-5
S	6-7
M	8
L	10-12
XL	14-16
XXL	18-20

boys slim

Age	Size	Height(in)	Chest	Waist
3-4	4s	38-40	22	19.5
4-5	5s	41-43	23	20
5-6	6s	44-46	24	20.5
6-7	7s	47-48	25	21
7-8	8s	49-50	26	22
9-10	10s	51-54	27	23
11-12	12s	55-58	28.5	24
12-13	14s	59-61	30	25

boys husky

Age	Size	Height (in)	Chest	Waist
9-10	10h	51-54	30	27
11-12	12h	55-58	32	28
12-13	14h	59-61	34	29
	16h	62-64	35	30.5
	18h	65-66	36.5	31.5
	20h	67-68	38	32.5
	36h			36
14 & up	38h			38
	40h	5'6"-5'10"		40
	l		40-42	
	xl		42-44	
	2xl		44-46	

girls

Age	Size	Weight(in)	Height(in)	Chest	Waist
Pre-sch	2t	25-28	33-34	21	20.5
	3t	29-32	35-36	22	21
	4t	33-36	37-38	23	21.5
3-4	4	33-36	36-39	23	21
4-5	5	37-40	40-42	24	21.5
5-6	6	41-46	43-45	25	22
6	6x	47-50	46-47	25.5	22.5
6-7	7	51-55	48-49	26	23
7-8	8	56-63	50-52	27	23.5
9-10	10	64-74	53-55	28.5	24.5
11-12	12	75-84	56-58	30	25.5
12-13	14	85-94	59-60	31.5	26.5
	16		61-62	33	28
14 & up	18	95 & up	63-64	34.5	29
	20		65-67	36	30

girls alpha

XS	4-5
S	6-6x
M	7-8
L	10-12
XL	14-16

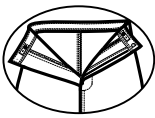
girls slim

Age	Size	Height(in)	Chest	Waist
3-4	4s	36-39	22	19.5
4-5	5s	40-42	23	20
5-6	6s	43-45	24	20.5
6	6xs	46-47	25	21
6-7	7s	48-49	25.5	21.5
7-8	8s	50-52	26	22
9-10	10s	53-55	27	23
11-12	12s	56-58	28.5	24
12-13	14s	59-60	30	25

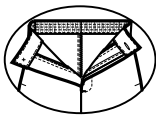
girls plus

Age	Size	Height(in)	Chest	Waist
9-10	10.5	53-55	31.5	27.5
11-12	12.5	56-58	33	28.5
12-13	14.5	59-60	34.5	29.5
13-14	16.5	61-63	36	30.5
	18.5	64-65	37.5	31.5
	20.5	65-66	39	32.5
15 & up	42		42	
	44		44	
	46		46	
	38	5'4"-5'7"		35.5
	40			37.5
	42			39.5

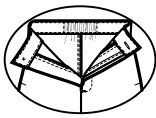
French Toast School Uniforms are made for growing boys and girls. Therefore, we have built in the necessary features to ensure the best fit possible. Most girls and boys bottoms in sizes 4-6x and 4-7 are constructed with half backelastic or adjustable waist. Sizes 7-14 and 8-14 include a grow waist or adjustable waist. Also, most of our 16-20 sizes feature the full make waistband.



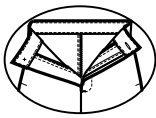
ADJUSTABLE WAIST



4/6X HALF ELASTIC



7-14
GROW WAIST



16-20
FULL MAKE



HEIGHT Measure your child without shoes, feet together and back to the wall. Place tape measure from the floor to top of head.

CHEST Place tape measure under your child's arms and around the fullest part of his chest. Tape should be comfortably loose.

WAIST Measure your child in his underwear. At his natural waistline, place one finger in between the tape and your child's body.



ASSORTMENT PACKS

boys

2T-4T BA	2T	3T	4T	
assortment	2	5	5	
4-7 CA	4	5	6	7
assortment	2	3	4	3
8-14 HB	8	10	12	14
assortment	3	3	3	3
16-20 HJ	16	18	20	
assortment	5	4	3	

XS-S CC	XS(4/5)	S(6/7)				
assortment	4	8				
M-XL HY	M(8)	L(10/12)	XL(14/16)			
assortment	4	6	2			
XS-XXL YH	XS(4/5)	S(6/7)	M(8)	L(10/12)	XL(14/16)	XXL(18/20)
assortment	1	2	3	3	2	1

slim / husky

4S-7S CB	4S	5S	6S	7S		
assortment	2	3	4	3		
8S-14S HC	8S	10S	12S	14S		
assortment	3	3	3	3		
10H-20H HK	10H	12H	14H	16H	18H	20H
assortment	1	1	2	3	3	2
L-XXL (TOP) JN	L	XL	2XL			
assortment	4	4	4			
36-40 (BOTTOM) JK	36	38	40			
assortment	4	4	4			

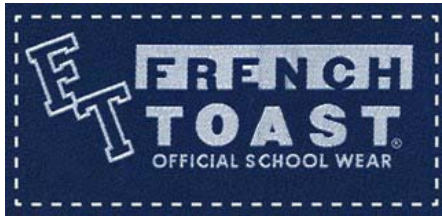
girls

2T-4T MA	2T	3T	4T		
assortment	2	5	5		
4-6X UA	4	5	6	6X	
assortment	2	3	4	3	
7-14 XA	7	8	10	12	14
assortment	2	3	3	2	2
16-20 XD	16	18	20		
assortment	5	4	3		

XS-S UU	XS(4/5)	S(6/6X)			
assortment	4	8			
M-XL XY	M(7/8)	L(10/12)	XL(14/16)		
assortment	4	6	2		

slim / plus

4S-6XS UV	4S	5S	6S	6XS		
assortment	2	3	4	3		
7S-14S GA	7S	8S	10S	12S	14S	
assortment	2	3	3	2	2	
10.5-20.5 XH	10.5	12.5	14.5	16.5	18.5	20.5
assortment	1	1	2	3	3	2
42-46(TOP) XJ	42	44	46			
assortment	5	4	3			
38-42(BOTTOM) GK	38	40	42			
assortment	4	4	4			



Contact your local representative for information regarding
FRENCH TOAST OFFICIAL SCHOOL WEAR®



Thank you
ER GRAPHICS

Heather Brazell-Hill
Regional Sales Manager

740.962.6899 [Ext. 101]

hbhill@ergraphics.com
www.ergraphics.com

-
- Please remember ER Graphics will not be undersold!!
 - If you find a lower price, we will beat it!!
-

- • • • We are certified...
 - Ohio M.B.E. • Ohio E.D.G.E. Certified
 - 8(a) pending • H.U.B. Zone pending
 - D.B.E. pending • S.B.A. pending
-

Our Services include...

- Screen Printed Apparel & Hats
- Embroidered Apparel & Hats
- Signs (Aluminum, PVC, Vinyl)
- Banners (Vinyl)
- Promotional Items
- Business Stationary
- Trophies and Awards
- Website Design & Hosting
- Logo Design
- and lots more



APPAREL GROUP
A LOLLYTOGS COMPANY

www.ltapparel.com

©2013 LT Apparel Group, All Rights Reserved.

